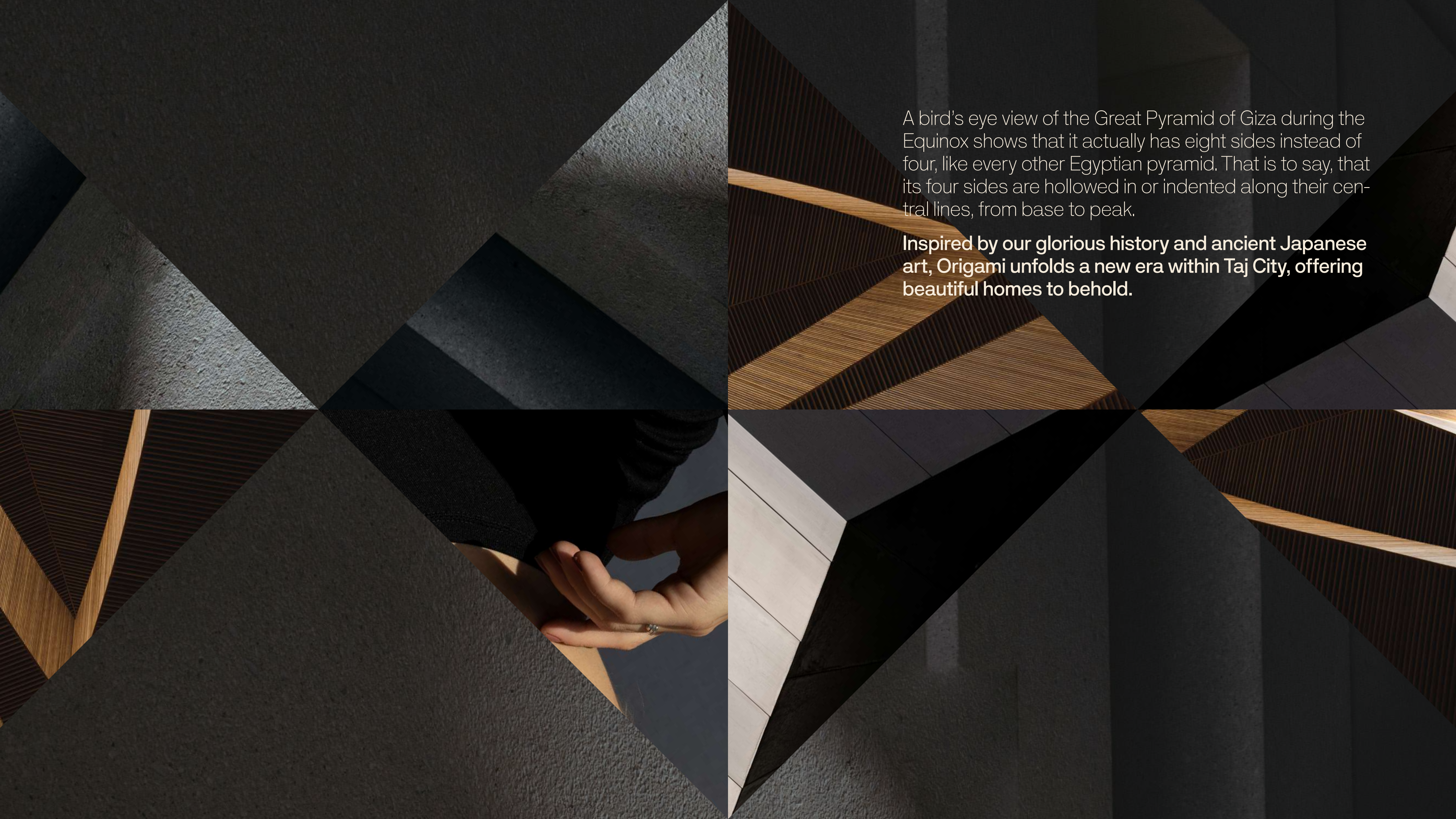


Camelia Apartments

origami
golf



A bird's eye view of the Great Pyramid of Giza during the Equinox shows that it actually has eight sides instead of four, like every other Egyptian pyramid. That is to say, that its four sides are hollowed in or indented along their central lines, from base to peak.

Inspired by our glorious history and ancient Japanese art, Origami unfolds a new era within Taj City, offering beautiful homes to behold.

new era of Taj
unfolds.

Orin

Orin



introducing Origami Golf

a signature life in the form of art.

Following in the success footsteps of Origami's first phase, we're proudly introducing phase two; an interconnected dream-like reality at the intersection of life and infinite tranquility. Thoughtfully designed with your convenience in mind, Origami Golf is ideally situated in the heart of Taj City, directly between Shinzo Abe Axis and Club Side project. Moreover, the new phase is seamlessly connected with Phase 1 via a safe pedestrian tunnel, for excitement to abound in every step.

Boasting a signature collection of unit types spanning expansive standalone villas and elegantly-appointed apartment buildings, Origami Golf promises authentic experiences.

precious memories to
withhold.





proximity & location


**the closest you'll ever be
to the entire city.**

Origami promises a hassle-free living experience that allows you to enjoy in a private lifestyle of utmost luxury while lying minutes away from Cairo's lively happenings in every direction.

The mixed-use residential community crowns an ideal location, offering homeowners direct access to both the Suez Road and The Ring Road. Origami also crowns the very edge of Taj City not only elevating new standards of modern living but also opening onto majestic views of the entire development.

a community-centric
vision.



A close-up photograph of a hand with light blue nail polish holding a pair of dark sunglasses. The hand is positioned over a light-colored, woven basket. The background is a soft, out-of-focus interior setting. The image is partially obscured by a white triangular overlay in the top-left corner.

for memorable
times

commercial distinction

Taj City's commercial area is a lively destination to shop, recreate or simply connect with friends over coffee.

Crisp, contemporary and always exciting, the commercial area is a guarantee for good times, thanks to a hand-picked variety of brands across varied categories, in addition to fresco cafés and signature F&B concepts inspiring day-long indulgence.




an active lifestyle where
greenery abounds

seamless walkability

Kick-start your day with a brisk walk along manicured landscapes, cycle to get your blood flowing or simply join friends to jog where immaculate nature follows you, everywhere you go.

Master-planned with families well-being in mind, Taj City invites the whole community to create an uninterrupted connection with the natural world while staying active, thanks to true accessibility of all amenities on foot.

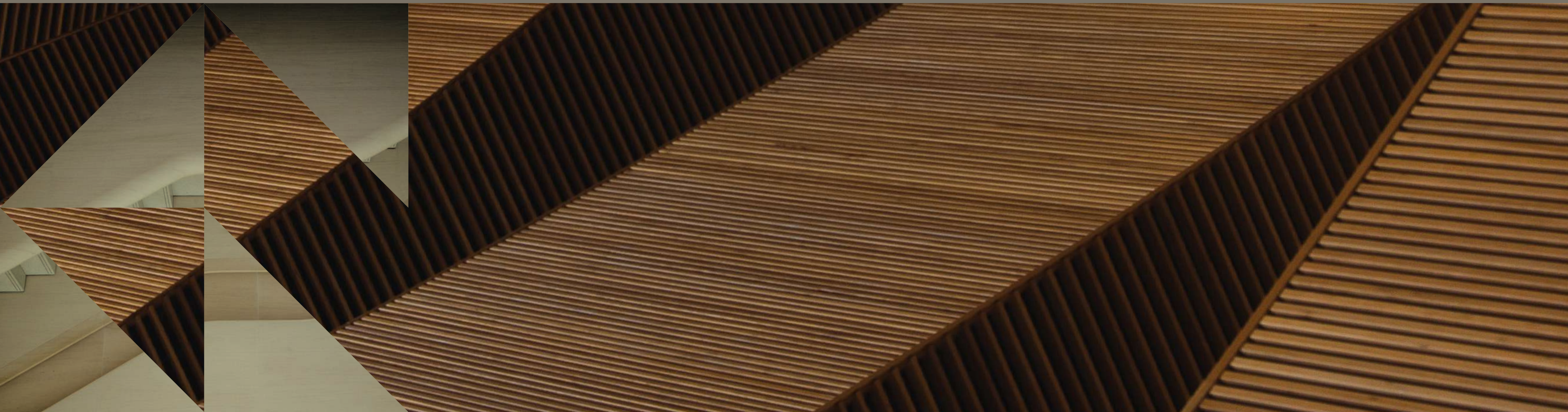


for every
lifestyle

flexible unit spaces

Taj City's signature collection of elegantly-appointed units are smartly designed around residents' various needs. With flexible spaces and highly functional layouts, each home captures a unique air of breathing freedom that allows homeowners to enjoy the best in modern-day function, as well as luxurious form. Ideal for young couples wishing to dream big and families wanting to elevate their lifestyle, Taj City's flexible unit types are truly a place to belong.

new stories yet
untold.





masterplan

elevating new standards of luxury.

Rolling out on an impressive 153,541 m² of land, Origami Golf is a self-sufficient community where exclusive amenities and nature inspire everyday life. Thoughtfully designed as a luxurious residential escape for people not cars, the parcel dedicates around 80% of its land to breathing spaces and lush interconnected roads to envelop residents in an ever-green reality that beautifully contrasts with minimal architecture, all around.

By putting walkability at the forefront of its masterplan, Origami Golf encourages homeowners to indulge in mindful moments while inviting them to discover authentic experiences on foot.

Origami Golf also features a golf area of 12,339 m², seamlessly blending recreation with the natural landscape.

inspired architecture

**a signature life in the
form of art.**

Every home at Origami captures the best in minimalist architecture where less is always more. Crafted to take breathing comfort and refined style to a whole new level of elegance, every unit boasts clean, unadorned façades that proudly rise from a private garden to inspire a tranquil life-style.

Boasting manicured terraces with large windows, your home is a unique sanctuary of calm that welcomes lush views inside your comfort zone, in addition to natural daylight.



Disclaimer: All illustrations, floor plans and dimensions are conceptual and subject to development as per contract terms.



Disclaimer: All illustrations, floor plans and dimensions are conceptual and subject to development as per contract terms.



Disclaimer: All illustrations, floor plans and dimensions are conceptual and subject to development as per contract terms.



Camelia Apartments

perspective & floorplans

Re-imagining balanced order from an innovative perspective, Camelia Apartments take the form of identical folded units to introduce a harmonious living space spread out on typical floors.

Starting from 58 m² to 169 m².



Disclaimer: All illustrations, floor plans and dimensions are conceptual and subject to development as per contract terms.



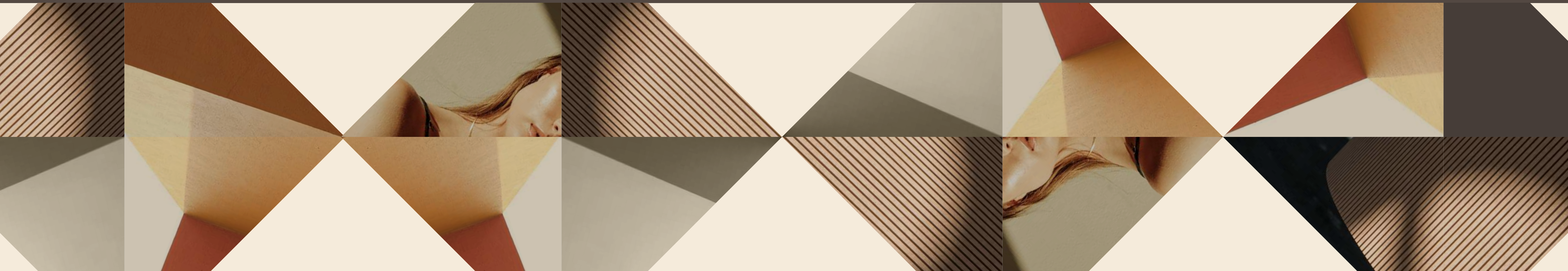
Disclaimer: All illustrations, floor plans and dimensions are conceptual and subject to development as per contract terms.



Disclaimer: All illustrations, floor plans and dimensions are conceptual and subject to development as per contract terms.

Camelia Apartments

Ground Floor



Camelia Apartments

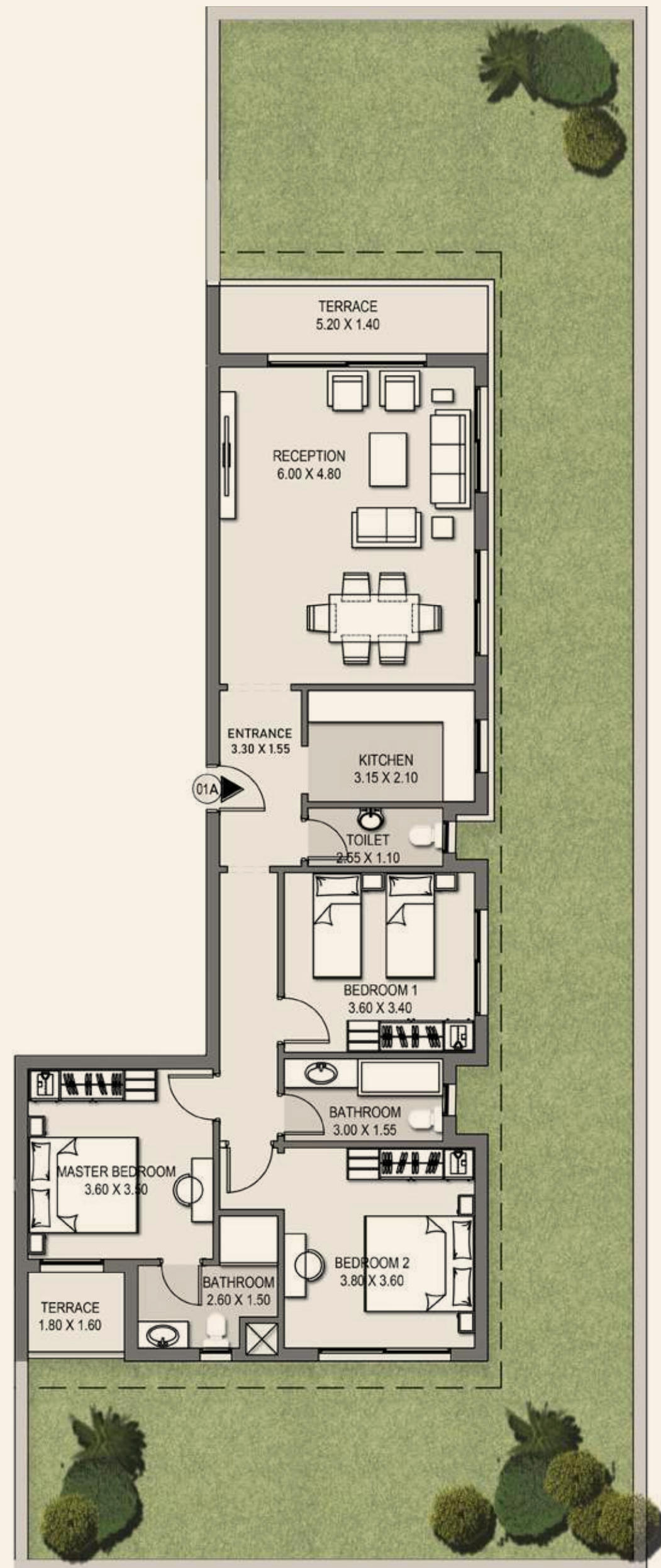
Ground Floor Plan



Disclaimer: All illustrations, floor plans and dimensions are conceptual and subject to development as per contract terms.

Camelia Apartments 01A

Total BUA: 164.50 m²



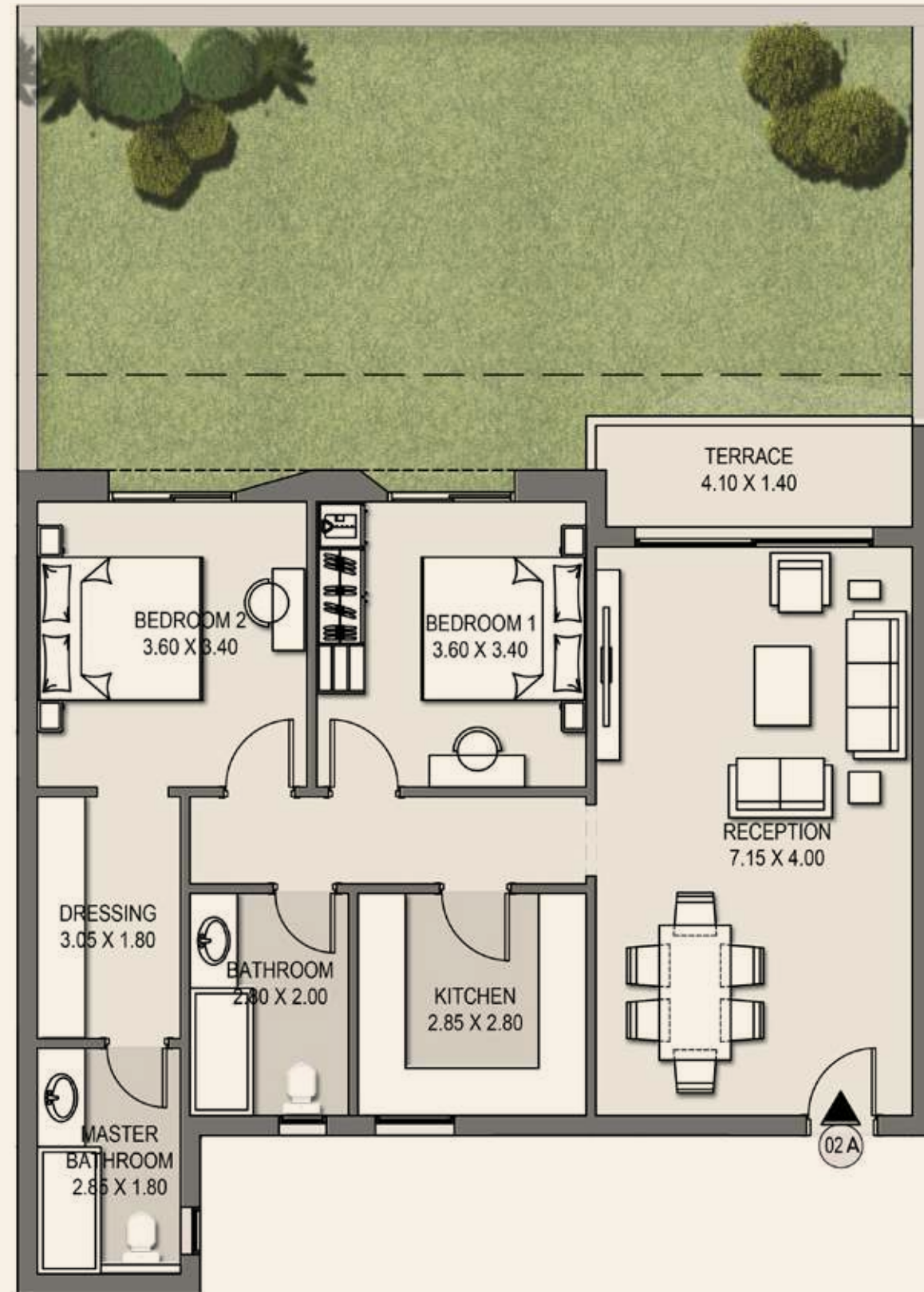
Ground Floor

Reception	6.00 x 4.80 m ²
Entrance	3.30 x 1.55 m ²
Kitchen	3.15 x 2.10 m ²
Toilet	2.55 x 1.10 m ²
Bedroom 1	3.60 x 3.40 m ²
Master Bedroom	3.60 x 3.50 m ²
Bathroom	2.60 x 1.50 m ²
Terrace	1.80 x 1.60 m ²
Bathroom	3.00 x 1.55 m ²
Bedroom 2	3.80 x 3.60 m ²
Terrace	5.20 x 1.40 m ²

Disclaimer: All illustrations, floor plans and dimensions are conceptual and subject to development as per contract terms.

Camelia Apartments 02A

Total BUA: 130.50 m²

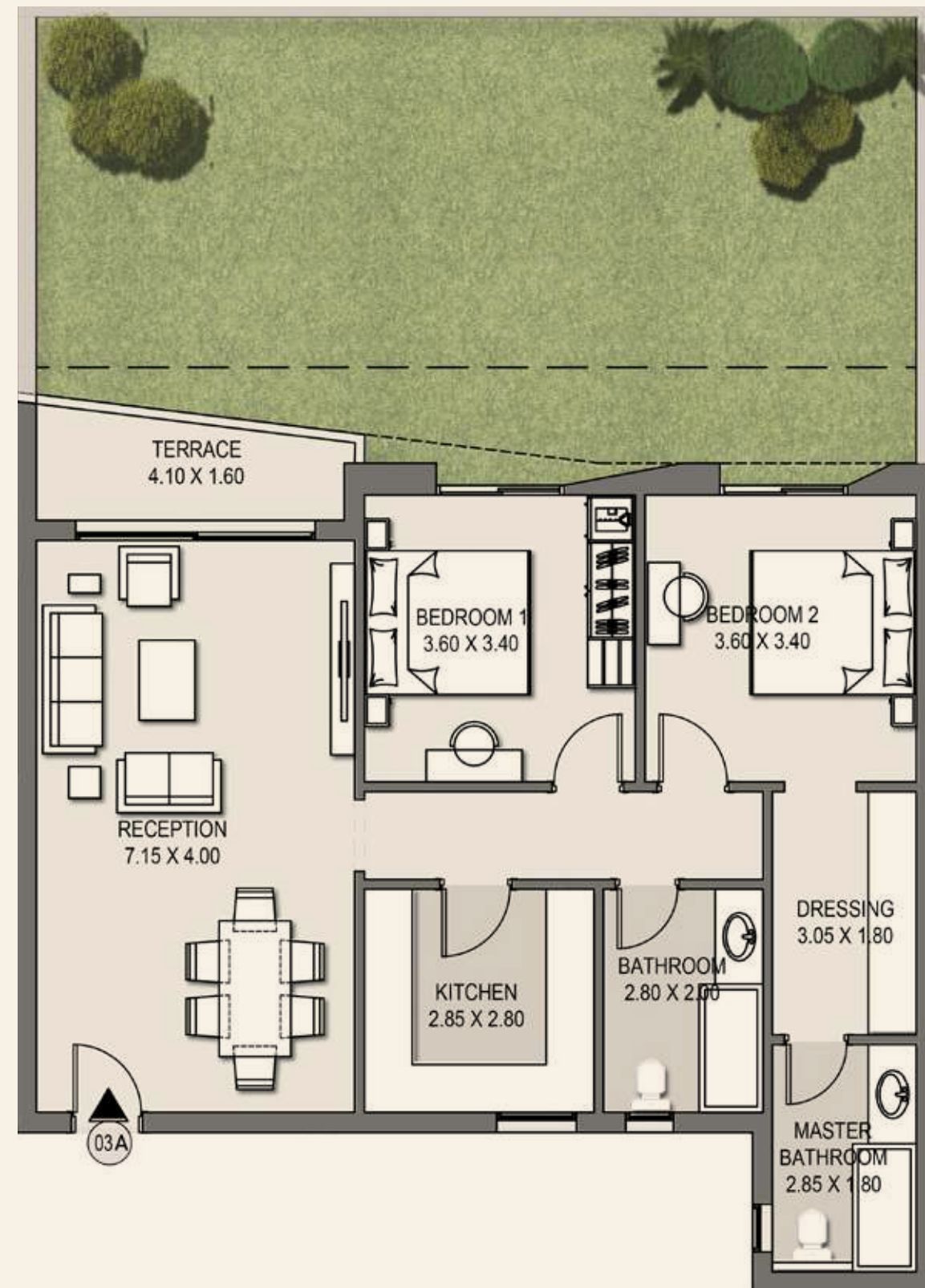


Ground Floor

Reception	7.15 x 4.00 m ²
Bedroom 1	3.60 x 3.40 m ²
Bedroom 2	3.60 x 3.40 m ²
Dressing	3.05 x 1.80 m ²
Master Bathroom	2.85 x 1.80 m ²
Bathroom	2.80 x 2.00 m ²
Kitchen	2.85 x 2.80 m ²
Terrace	4.10 x 1.40 m ²

Camelia Apartments 03A

Total BUA: 130.50 m²

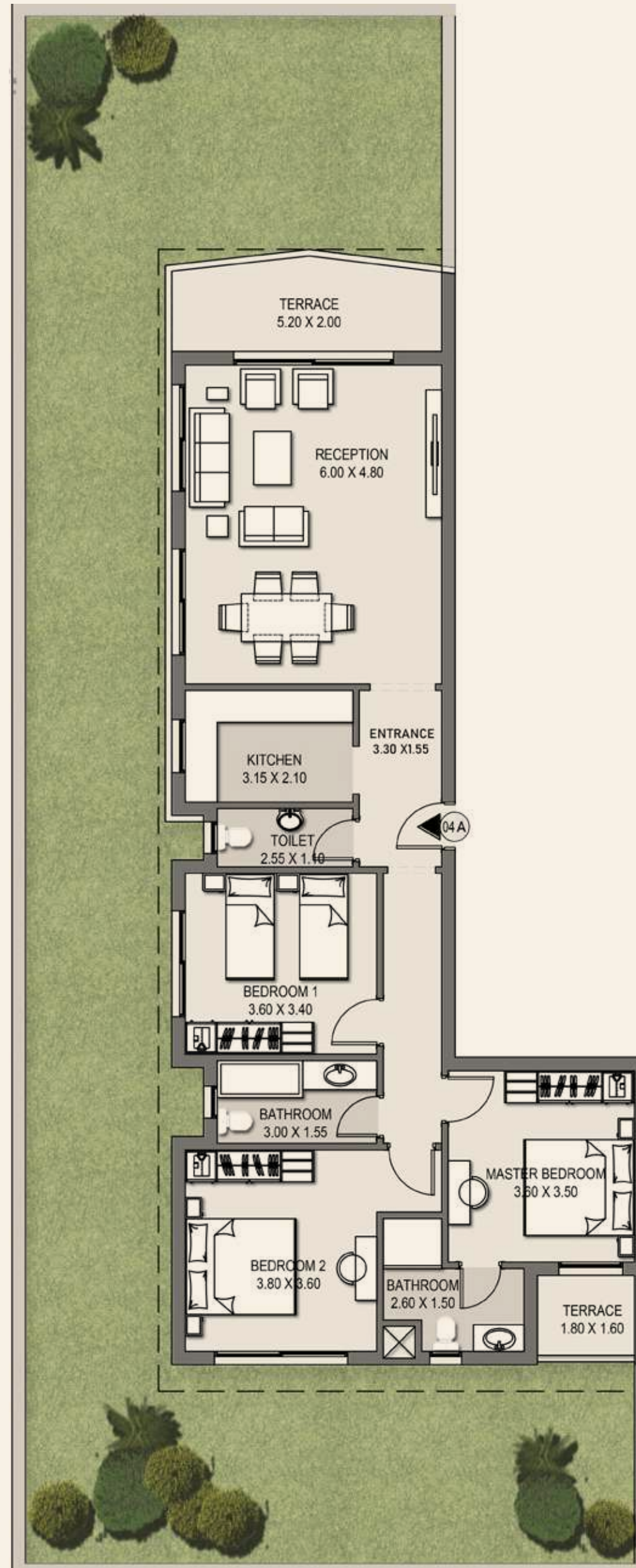


Ground Floor

Reception	7.15 x 4.00 m ²
Bedroom 1	3.60 x 3.40 m ²
Bedroom 2	3.60 x 3.40 m ²
Dressing	3.05 x 1.80 m ²
Master Bathroom	2.85 x 1.80 m ²
Bathroom	2.80 x 2.00 m ²
Kitchen	2.85 x 2.80 m ²
Terrace	4.10 x 1.60 m ²

Camelia Apartments 04A

Total BUA: 167 m²



Ground Floor

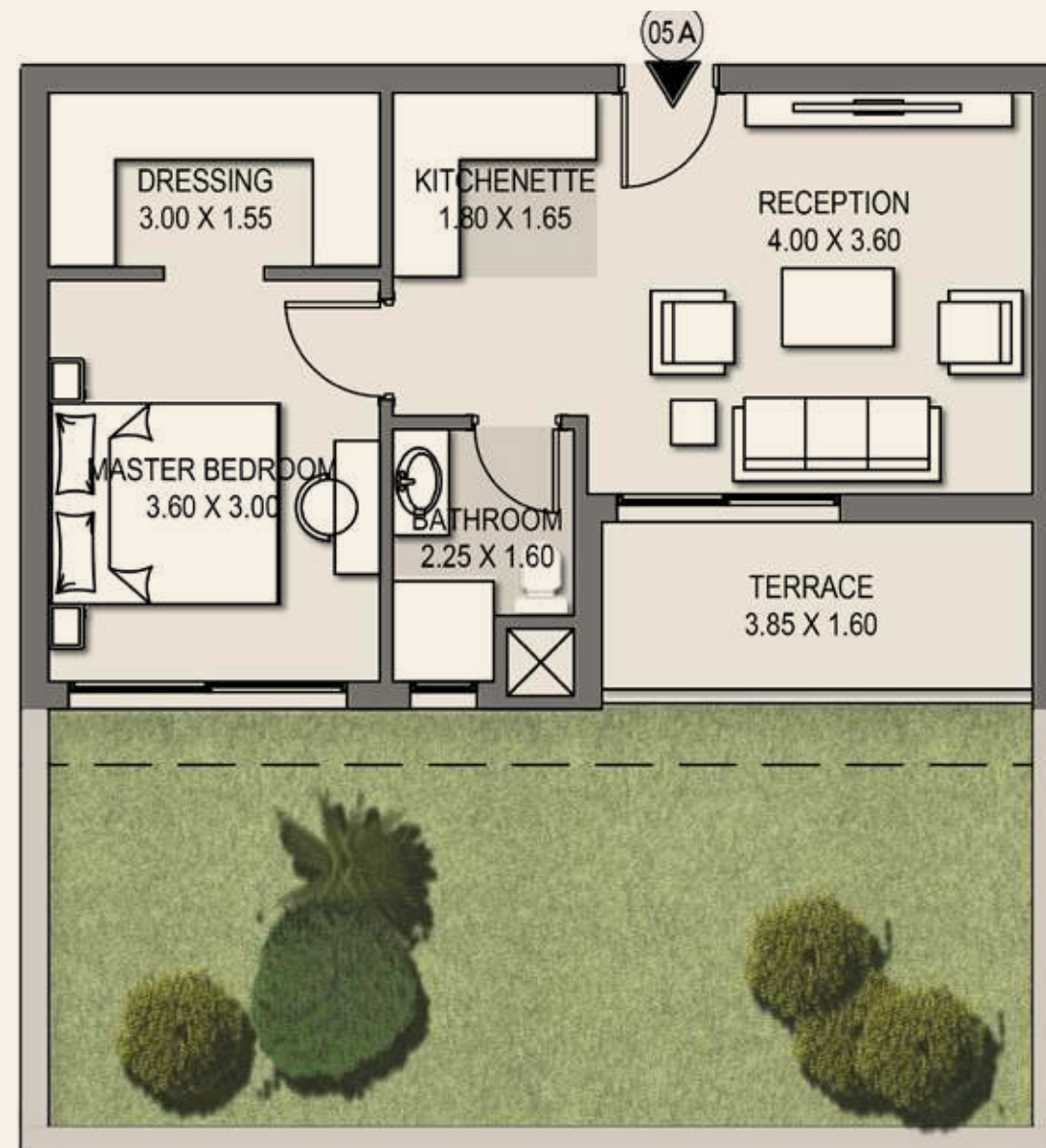
Reception	6.00 x 4.80 m ²
Entrance	3.30 x 1.55 m ²
Kitchen	3.15 x 2.10 m ²
Toilet	2.55 x 1.10 m ²
Bedroom 1	3.60 x 3.40 m ²
Master Bedroom	3.60 x 3.50 m ²
Bathroom	2.60 x 1.50 m ²
Terrace	1.80 x 1.60 m ²
Bathroom	3.00 x 1.55 m ²
Bedroom 2	3.80 x 3.60 m ²
Terrace	5.20 x 2.00 m ²

Disclaimer: All Illustrations, floor plans and dimensions are conceptual and subject to development as per contract terms.

Camelia Apartments 05A

Total BUA: 68.50 m²

Ground Floor



Reception	4.00 x 3.60 m ²
Master Bedroom	3.60 x 3.00 m ²
Dressing	3.00 x 1.55 m ²
Bathroom	2.25 x 1.60 m ²
Kitchenette	1.80 x 1.65 m ²
Terrace	3.85 x 1.60 m ²

Disclaimer: All Illustrations, floor plans and dimensions are conceptual and subject to development as per contract terms.

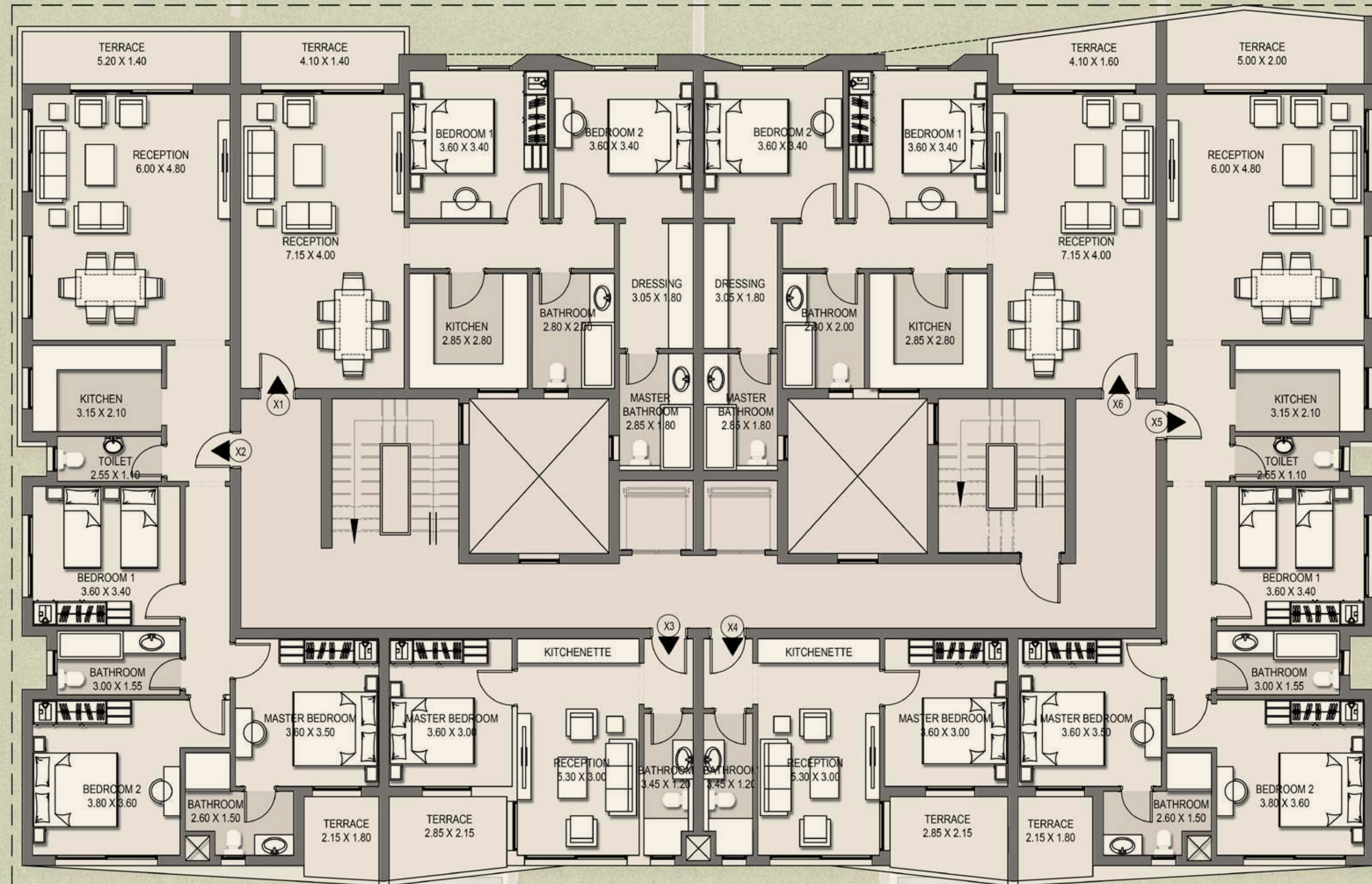
Camelia Apartments

First, Third & Fifth Floor



Camelia Apartments

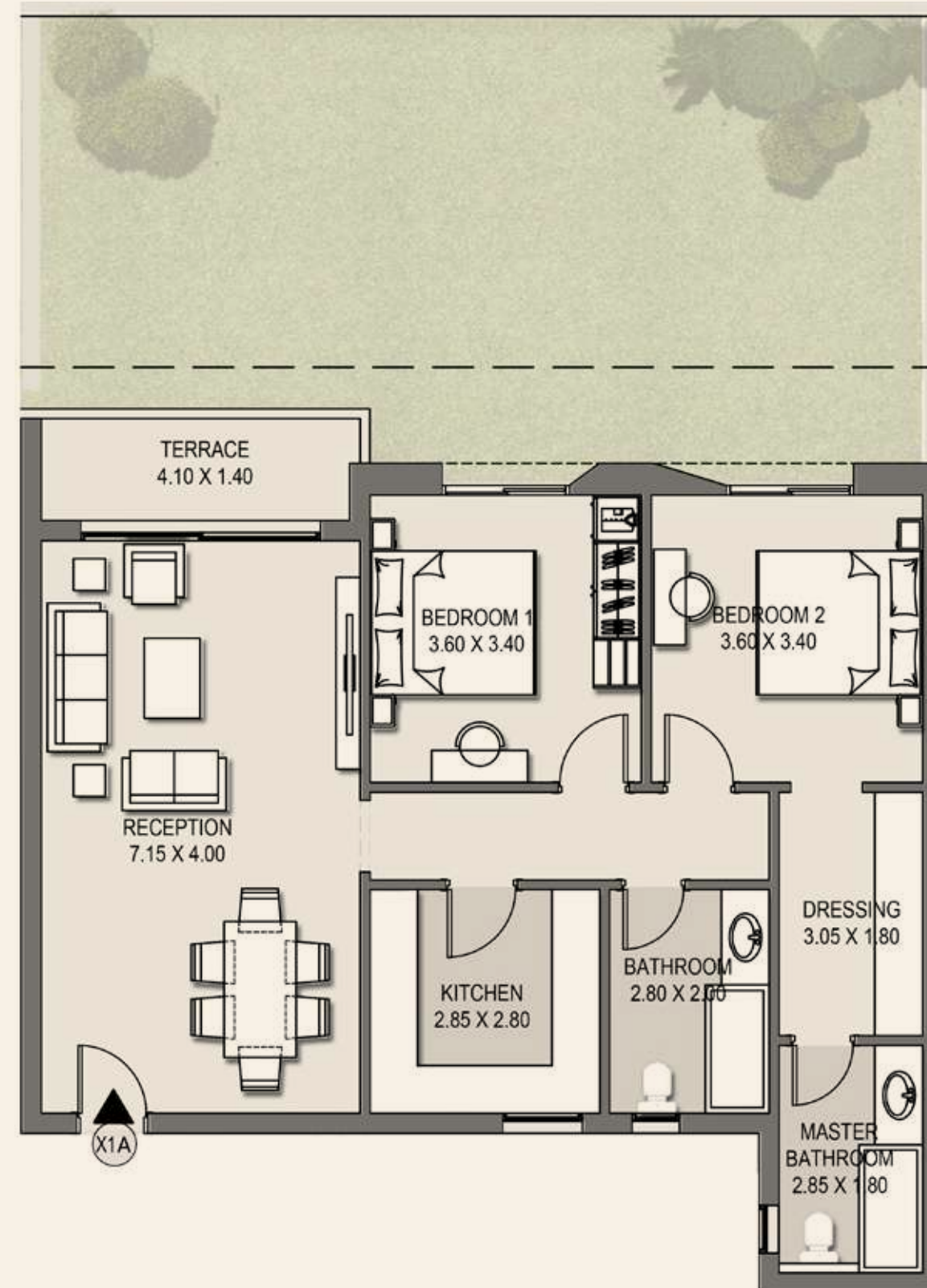
First, Third & Fifth Floor Plan



Disclaimer: All illustrations, floor plans and dimensions are conceptual and subject to development as per contract terms.

Camelia Apartments X1A

Total BUA: 129.50 m²

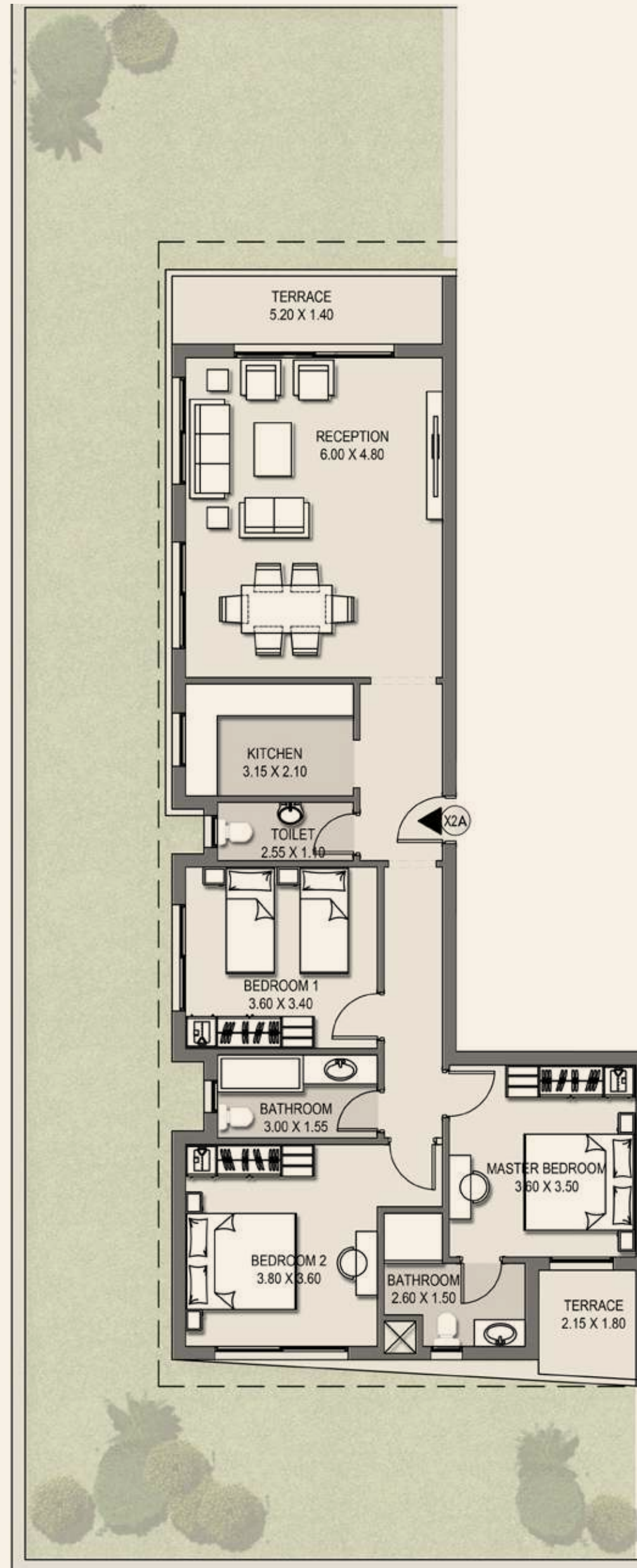


Reception	7.15 x 4.00 m ²
Bedroom	3.60 x 3.40 m ²
Bedroom	3.60 x 3.40 m ²
Dressing	3.05 x 1.80 m ²
Master Bathroom	2.85 x 1.80 m ²
Bathroom	2.80 x 2.00 m ²
Kitchen	2.85 x 2.80 m ²
Terrace	4.10 x 1.40 m ²

Disclaimer: All illustrations, floor plans and dimensions are conceptual and subject to development as per contract terms.

Camelia Apartments X2A

Total BUA: 166.50 m²



Reception	6.00 x 4.80 m ²
Kitchen	3.15 x 2.10 m ²
Toilet	2.55 x 1.10 m ²
Entrance	3.30 x 1.55 m ²
Bedroom 1	3.60 x 3.40 m ²
Master Bedroom	3.60 x 3.50 m ²
Bathroom	2.60 x 1.50 m ²
Terrace	2.15 x 1.80 m ²
Bathroom	3.00 x 1.55 m ²
Bedroom 2	3.80 x 3.60 m ²
Terrace	5.20 x 1.40 m ²

Disclaimer: All Illustrations, floor plans and dimensions are conceptual and subject to development as per contract terms.

Camelia Apartments X3A

Total BUA: 58 m²

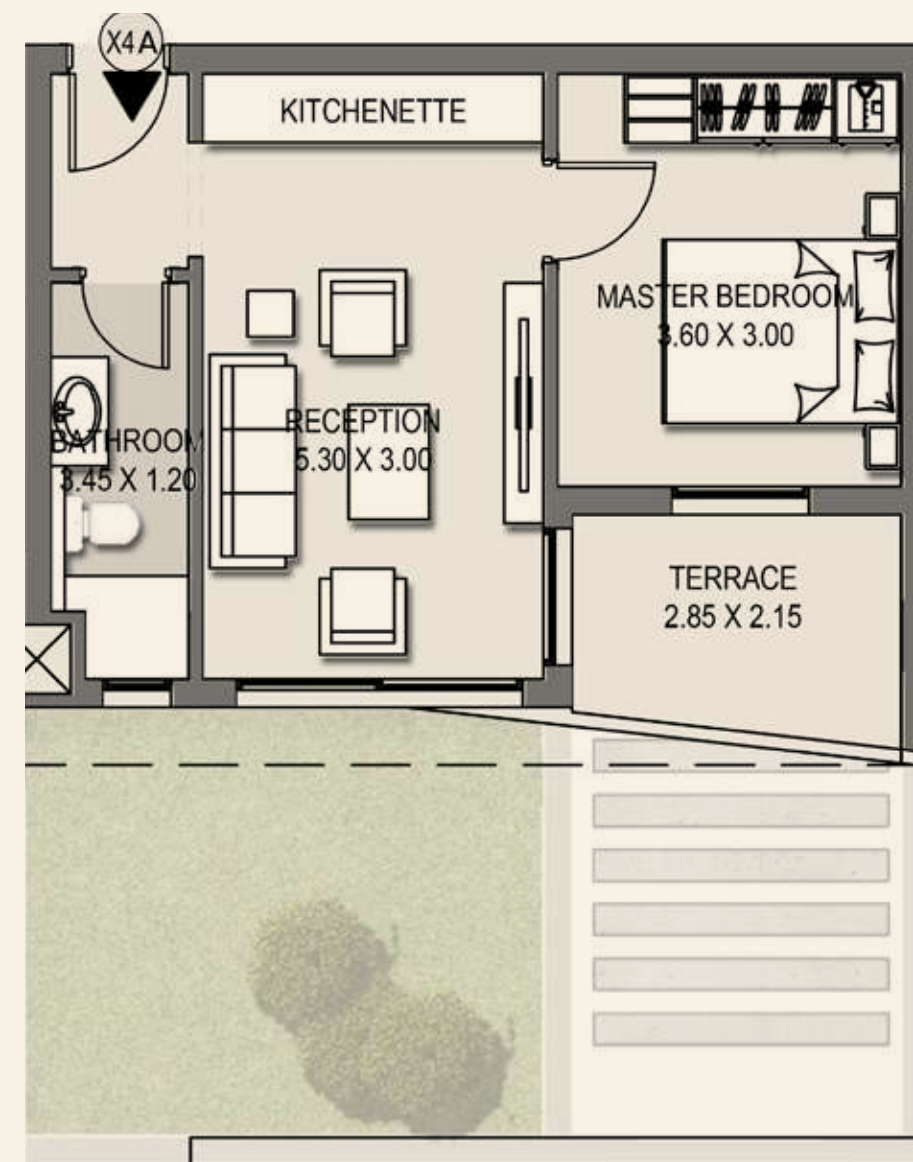


Reception	5.30 x 3.00 m ²
Master Bedroom	3.60 x 3.00 m ²
Bathroom	3.45 x 1.20 m ²
Terrace	2.85 x 2.15 m ²

Disclaimer: All Illustrations, floor plans and dimensions are conceptual and subject to development as per contract terms.

Camelia Apartments X4A

Total BUA: 58 m²



Reception 5.30 x 3.00 m²

Master Bedroom 3.60 x 3.00 m²

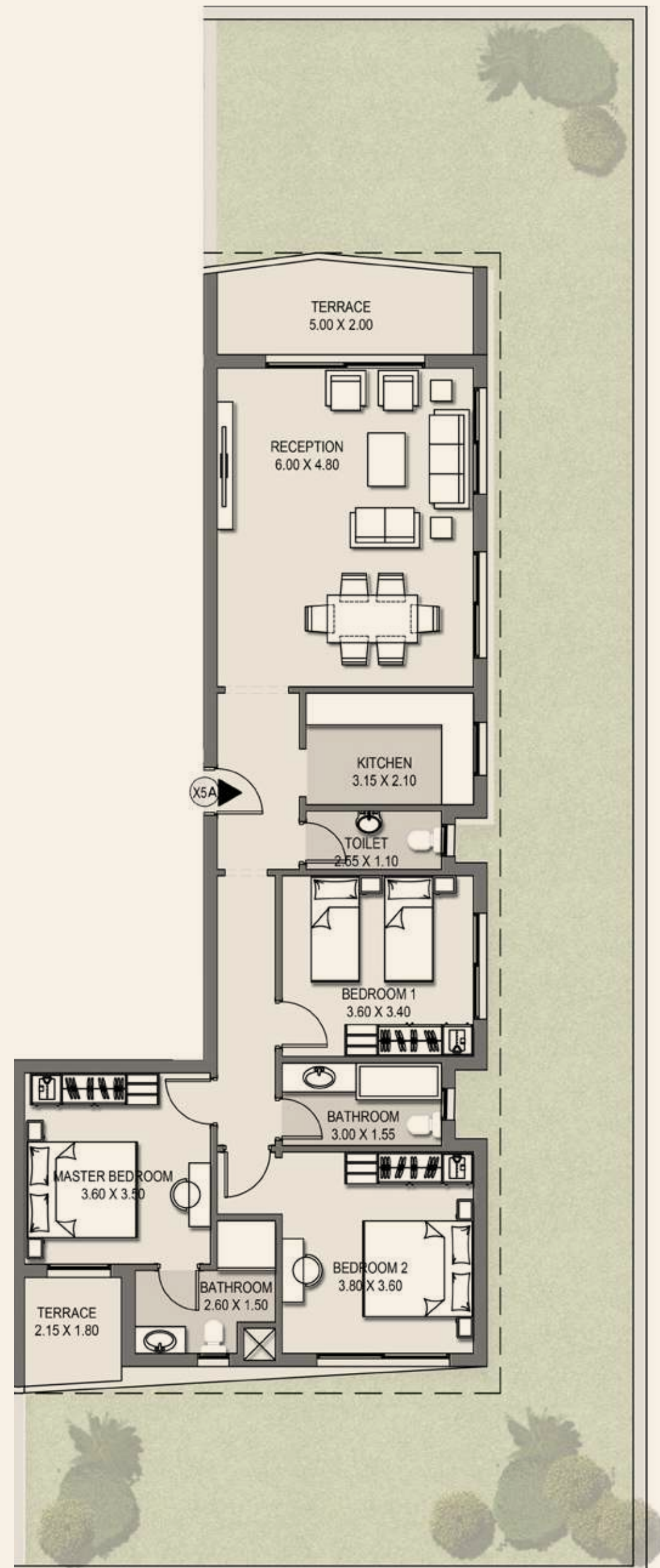
Bathroom 3.45 x 1.20 m²

Terrace 2.85 x 2.15 m²

Disclaimer: All Illustrations, floor plans and dimensions are conceptual and subject to development as per contract terms.

Camelia Apartments X5A

Total BUA: 169 m²

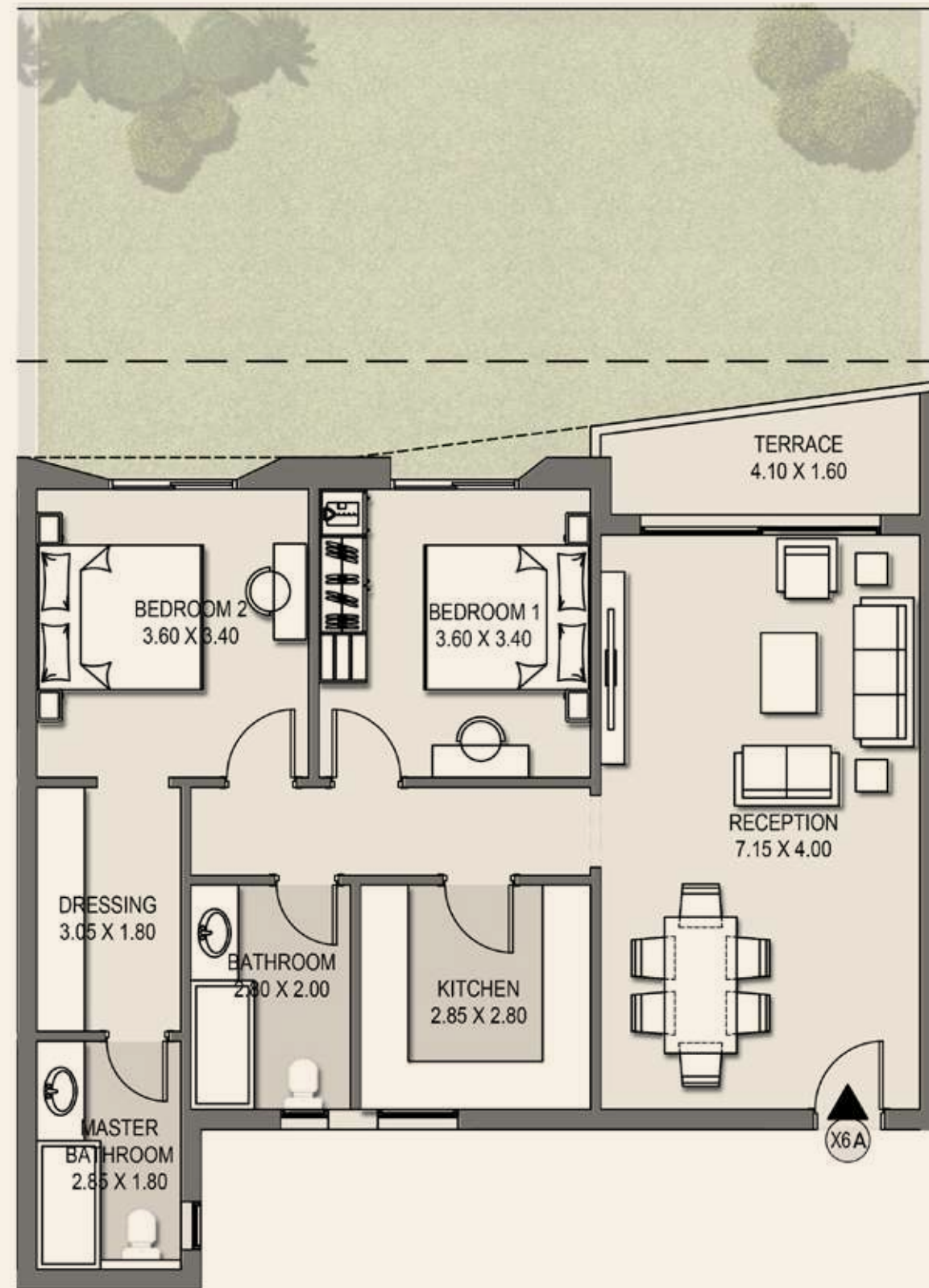


Reception	6.00 x 4.80 m ²
Entrance	3.30 x 1.55 m ²
Kitchen	3.15 x 2.10 m ²
Toilet	2.55 x 1.10 m ²
Bedroom 1	3.60 x 3.40 m ²
Master Bedroom	3.60 x 3.50 m ²
Bathroom	2.60 x 1.50 m ²
Terrace	2.15 x 1.80 m ²
Bathroom	3.00 x 1.55 m ²
Bedroom 2	3.80 x 3.60 m ²
Terrace	5.00 x 2.00 m ²

Disclaimer: All illustrations, floor plans and dimensions are conceptual and subject to development as per contract terms.

Camelia Apartments X6A

Total BUA: 131 m²



Reception	7.15 x 4.00 m ²
Bedroom 1	3.60 x 3.40 m ²
Bedroom 2	3.60 x 3.40 m ²
Dressing	3.05 x 1.80 m ²
Master Bathroom	2.85 x 1.80 m ²
Bathroom	2.80 x 2.00 m ²
Kitchen	2.85 x 2.80 m ²
Terrace	4.10 x 1.60 m ²

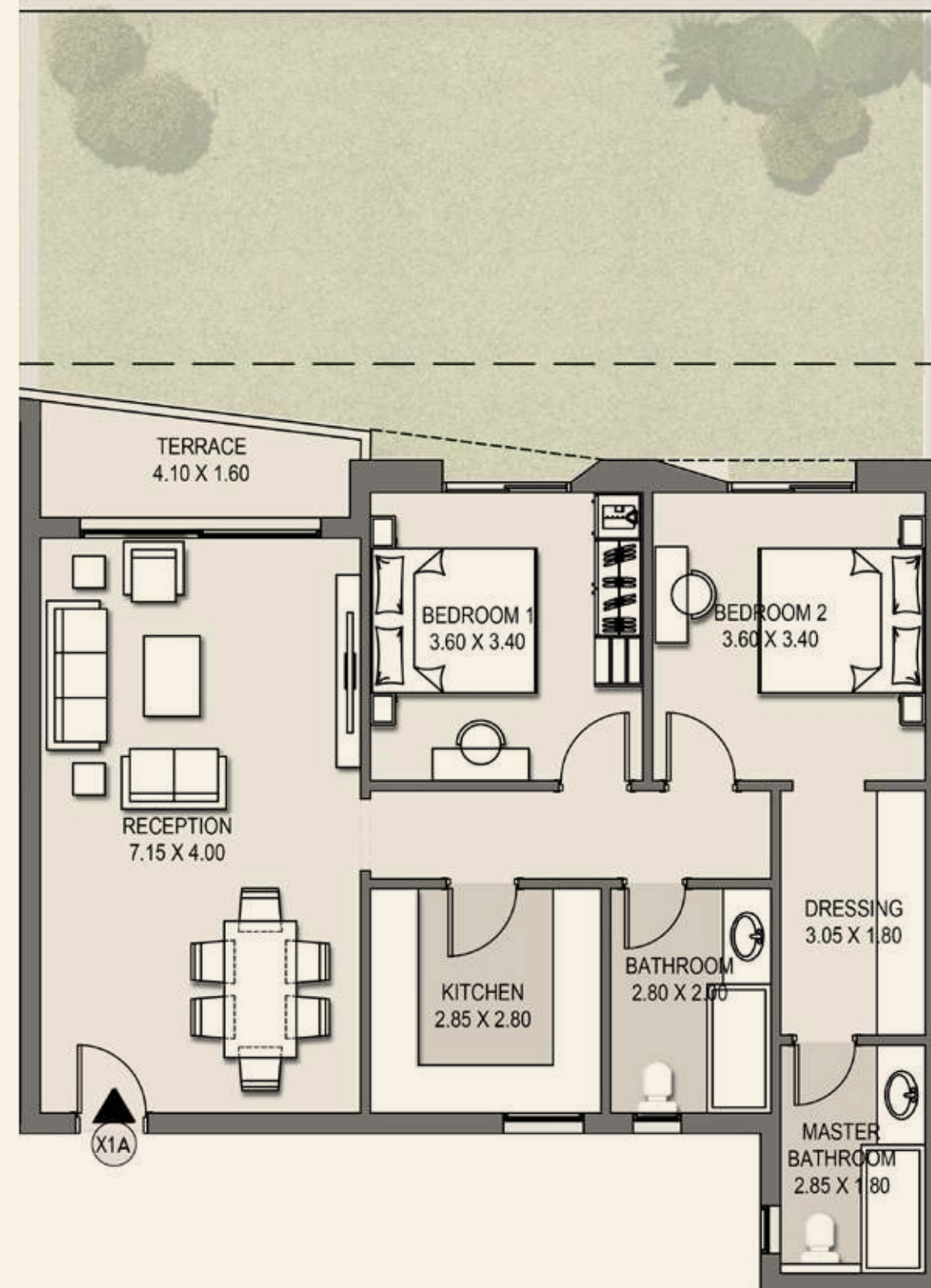
Camelia Apartments

Second & Fourth Floor



Camelia Apartments X1A

Total BUA: 130 m²

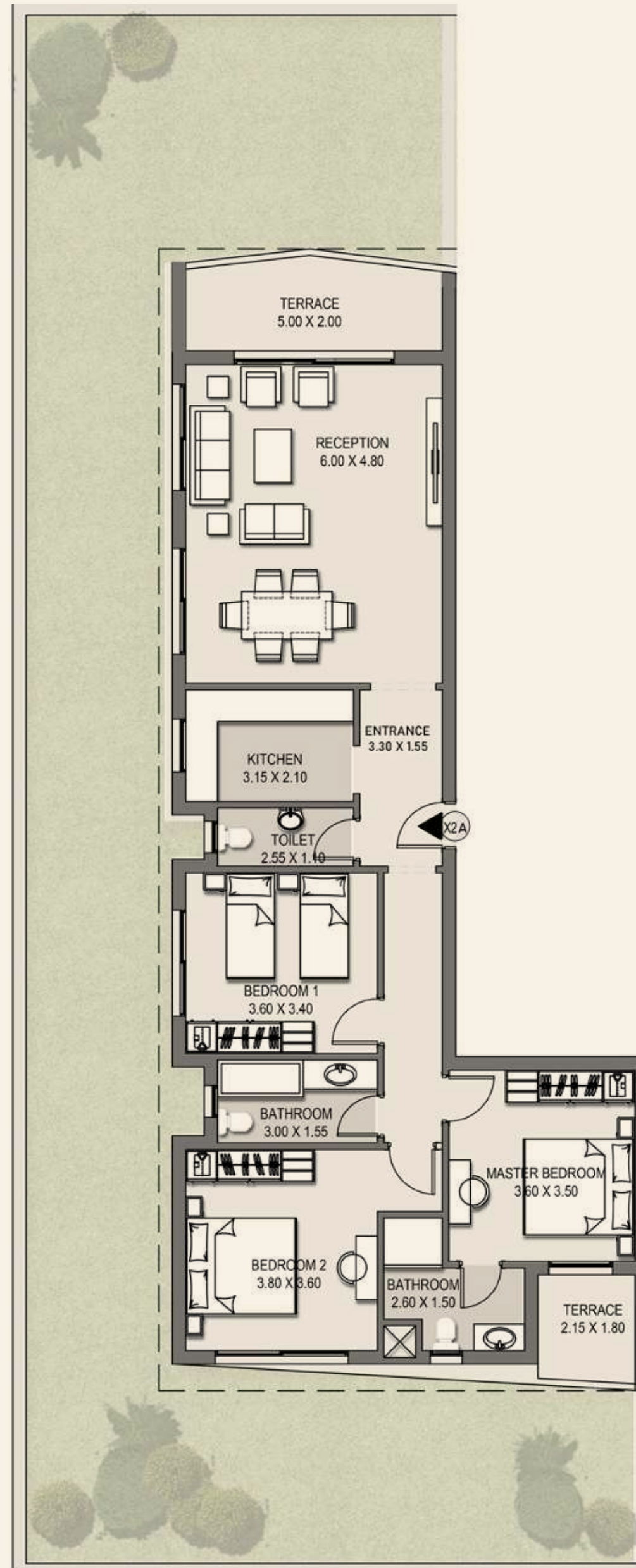


Reception	7.15 x 4.00 m ²
Bedroom 1	3.60 x 3.40 m ²
Bedroom 2	3.60 x 3.40 m ²
Dressing	3.05 x 1.80 m ²
Master Bathroom	2.85 x 1.80 m ²
Bathroom	2.80 x 2.00 m ²
Kitchen	2.85 x 2.80 m ²
Terrace	4.10 x 1.60 m ²

Disclaimer: All illustrations, floor plans and dimensions are conceptual and subject to development as per contract terms.

Camelia Apartments X2A

Total BUA: 169 m²



Reception	6.00 x 4.80 m ²
Entrance	3.30 x 1.55 m ²
Kitchen	3.15 x 2.10 m ²
Toilet	2.55 x 1.10 m ²
Bedroom 1	3.60 x 3.40 m ²
Master Bedroom	3.60 x 3.50 m ²
Bathroom	2.60 x 1.50 m ²
Terrace	2.15 x 1.80 m ²
Bathroom	3.00 x 1.55 m ²
Bedroom 2	3.80 x 3.60 m ²
Terrace	5.00 x 2.00 m ²

Disclaimer: All Illustrations, floor plans and dimensions are conceptual and subject to development as per contract terms.

Camelia Apartments X3A

Total BUA: 58 m²

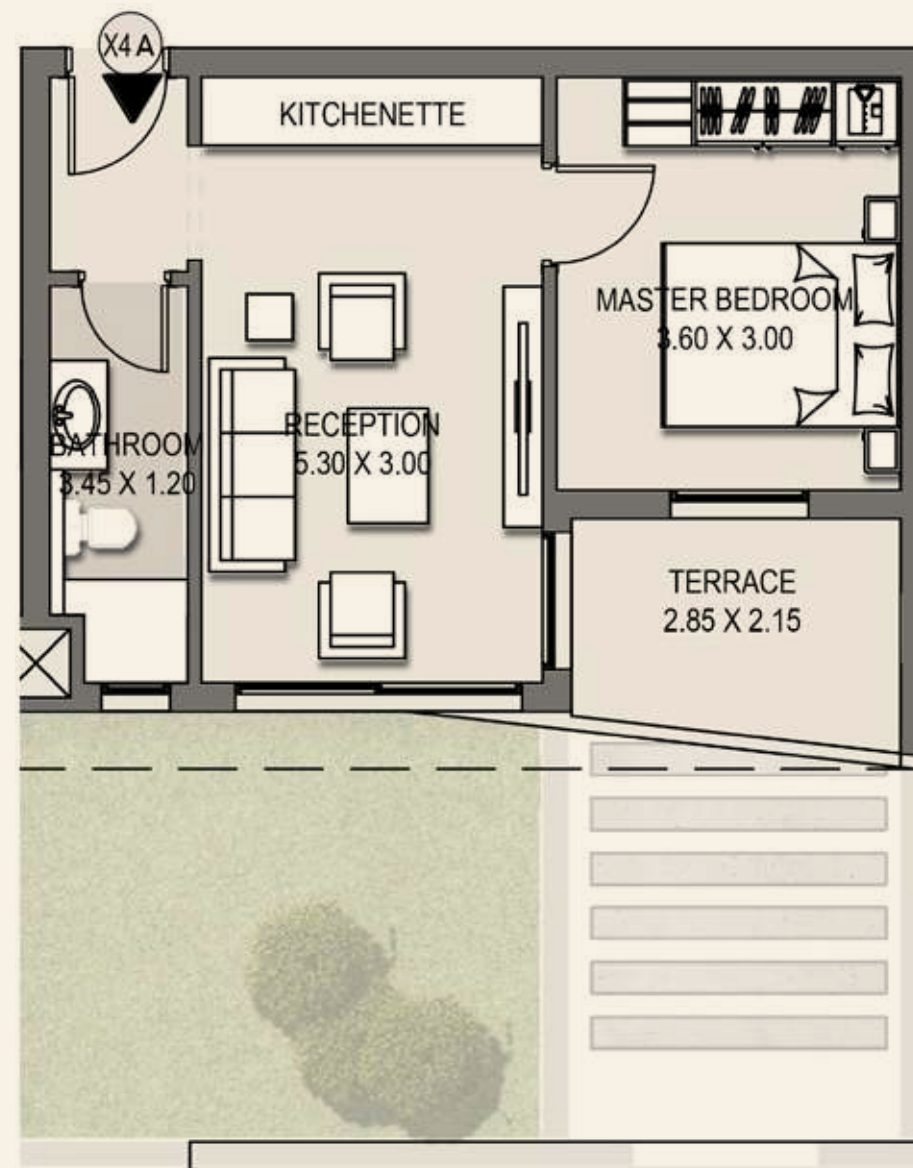


Reception	5.30 x 3.00 m ²
Master Bedroom	3.60 x 3.00 m ²
Bathroom	3.45 x 1.20 m ²
Terrace	2.85 x 2.15 m ²

Disclaimer: All Illustrations, floor plans and dimensions are conceptual and subject to development as per contract terms.

Camelia Apartments X4A

Total BUA: 58 m²

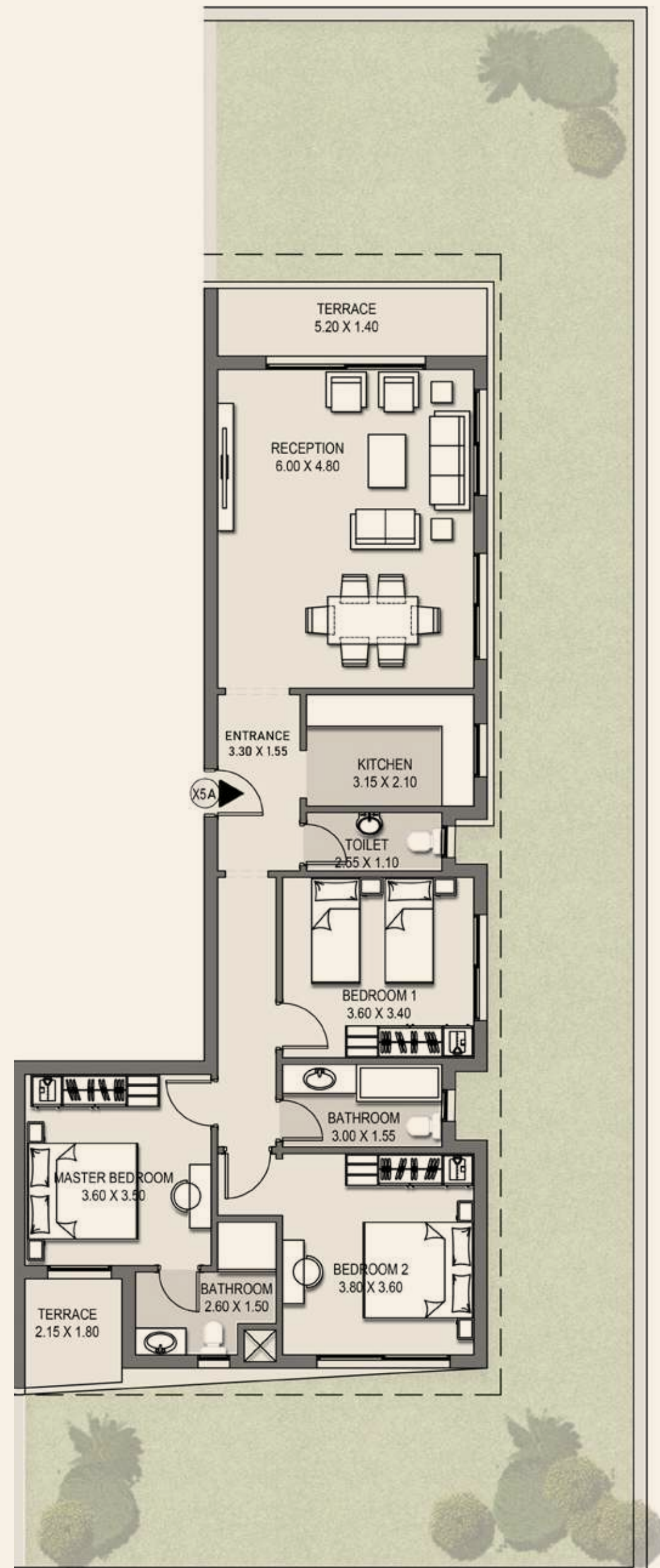


Reception	5.30 x 3.00 m ²
Master Bedroom	3.60 x 3.00 m ²
Bathroom	3.45 x 1.20 m ²
Terrace	2.85 x 2.15 m ²

Disclaimer: All Illustrations, floor plans and dimensions are conceptual and subject to development as per contract terms.

Camelia Apartments X5A

Total BUA: 166.50 m²

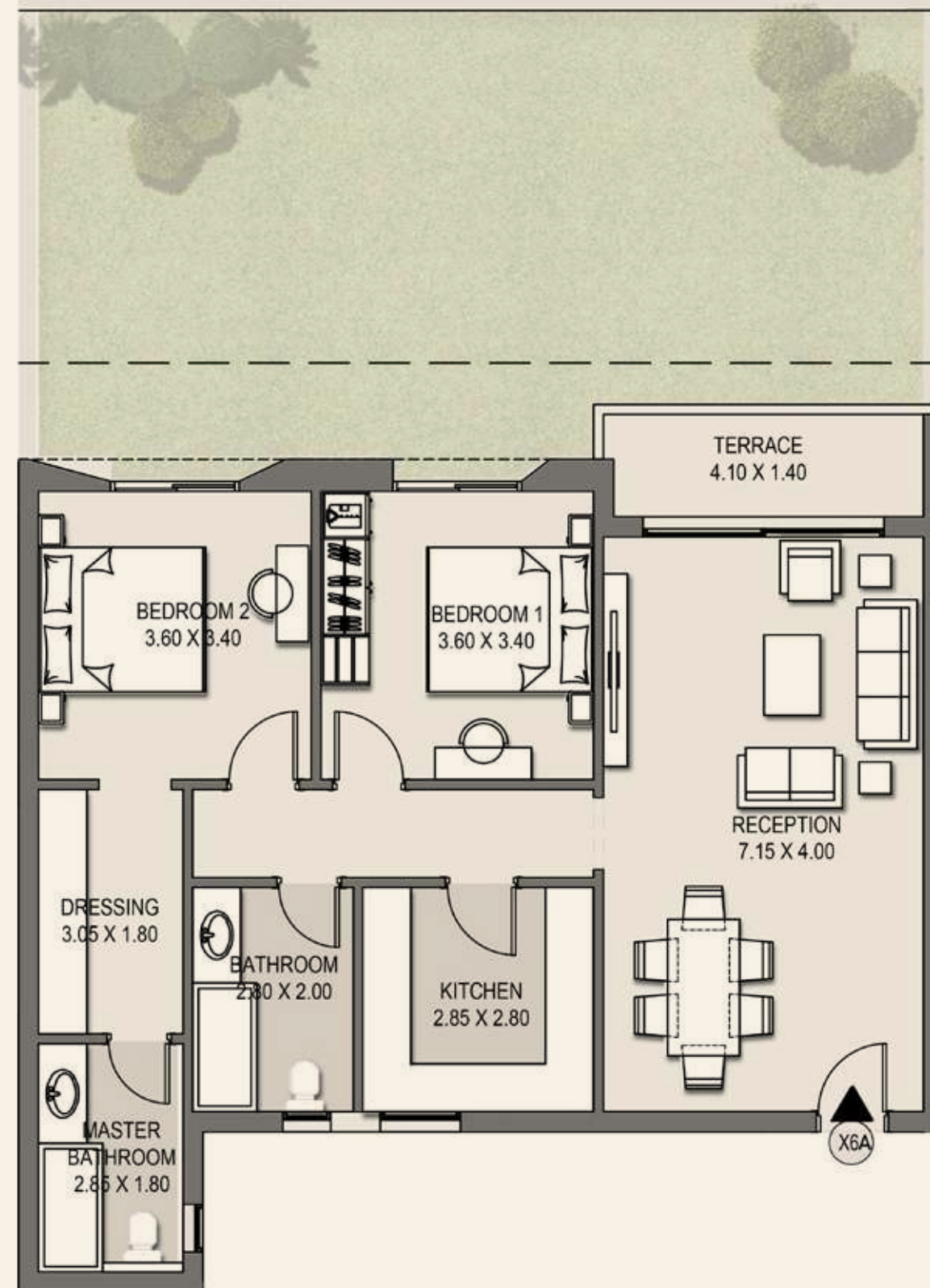


Reception	6.00 x 4.80 m ²
Kitchen	3.15 x 2.10 m ²
Toilet	2.55 x 1.10 m ²
Entrance	3.30 x 1.55 m ²
Bedroom 1	3.60 x 3.40 m ²
Master Bedroom	3.60 x 3.50 m ²
Bathroom	2.60 x 1.50 m ²
Terrace	2.15 x 1.80 m ²
Bathroom	3.00 x 1.55 m ²
Bedroom 2	3.80 x 3.60 m ²
Terrace	5.20 x 1.40 m ²

Disclaimer: All illustrations, floor plans and dimensions are conceptual and subject to development as per contract terms.

Camelia Apartments X6A

Total BUA: 130.50 m²



Reception	7.15 x 4.00 m ²
Bedroom 1	3.60 x 3.40 m ²
Bedroom 2	3.60 x 3.40 m ²
Dressing	3.05 x 1.80 m ²
Master Bathroom	2.85 x 1.80 m ²
Bathroom	2.80 x 2.00 m ²
Kitchen	2.85 x 2.80 m ²
Terrace	4.10 x 1.40 m ²

Disclaimer: All illustrations, floor plans and dimensions are conceptual and subject to development as per contract terms.

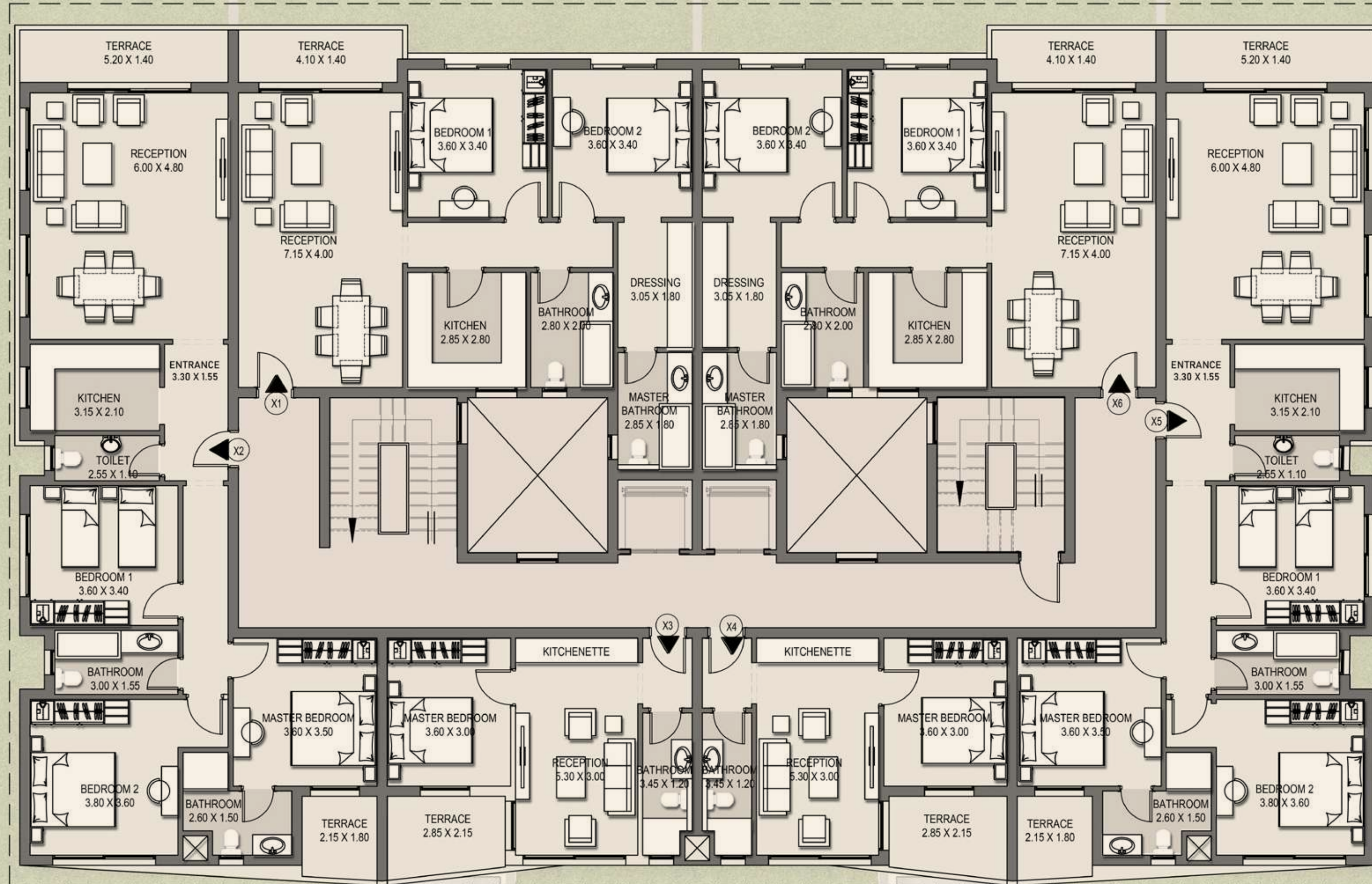
Camelia Apartments

Sixth Floor Plan



Camelia Apartments

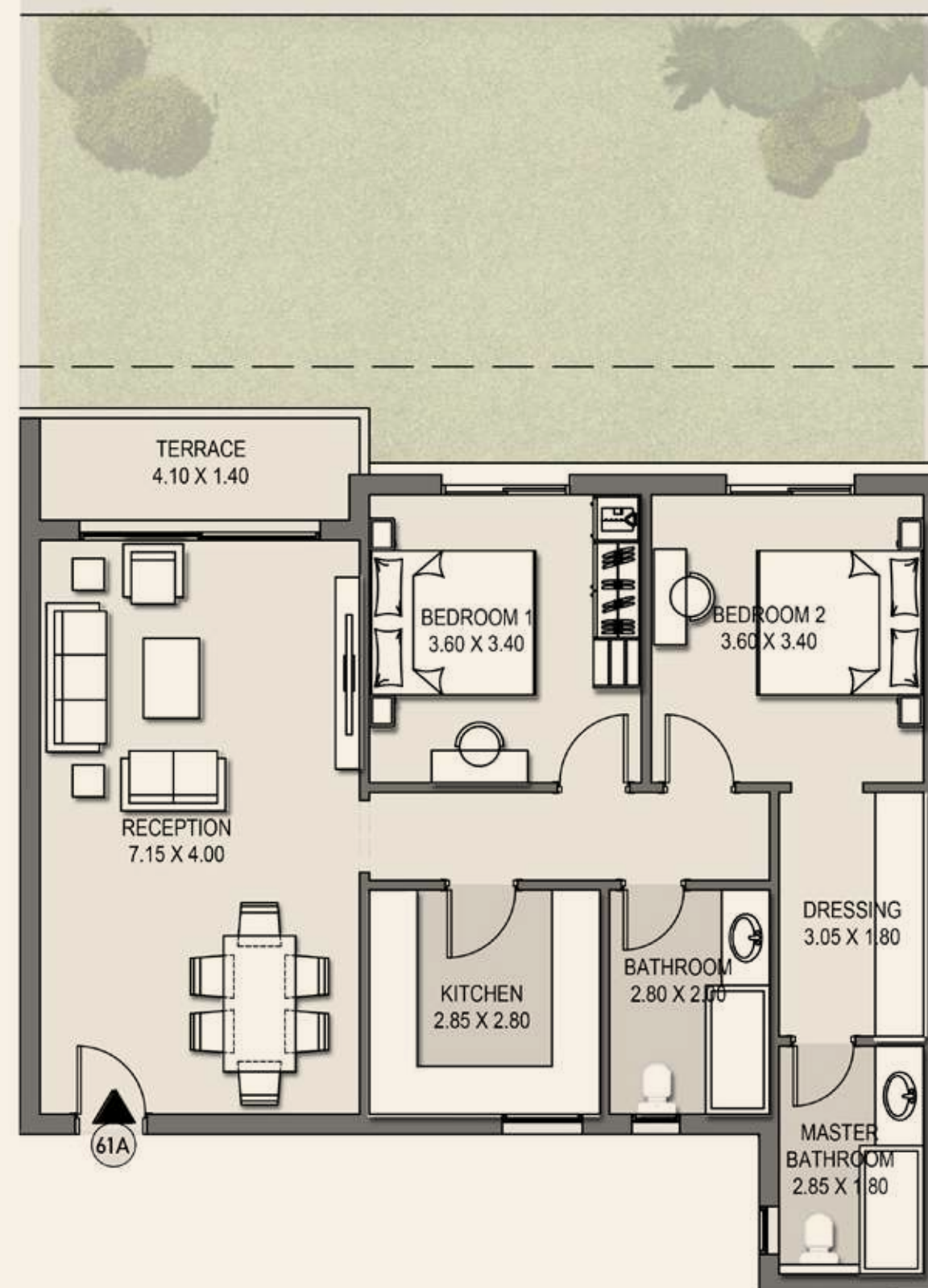
Sixth Floor Plan



Disclaimer: All illustrations, floor plans and dimensions are conceptual and subject to development as per contract terms.

Camelia Apartments 61A

Total BUA: 129 m²

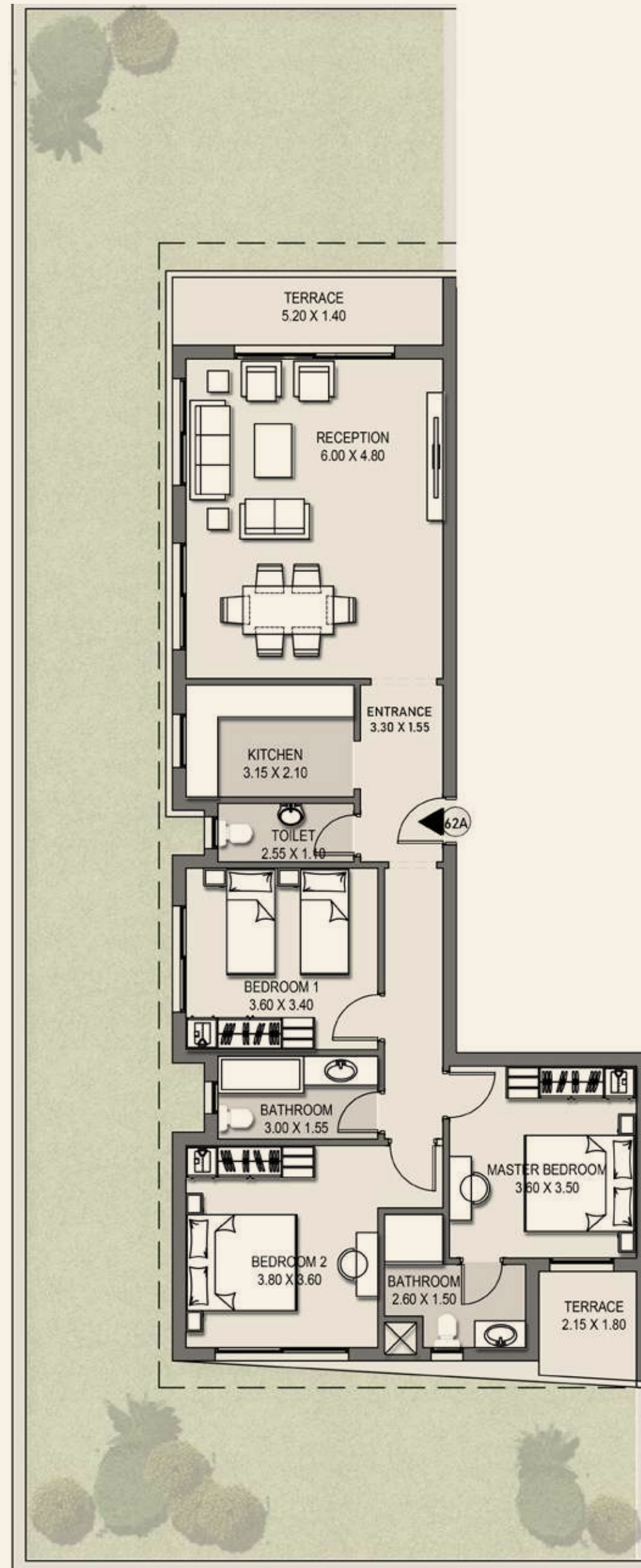


Reception	7.15 x 4.00 m ²
Bedroom 1	3.60 x 3.40 m ²
Bedroom 2	3.60 x 3.40 m ²
Dressing	3.05 x 1.80 m ²
Master Bathroom	2.85 x 1.80 m ²
Bathroom	2.80 x 2.00 m ²
Kitchen	2.85 x 2.80 m ²
Terrace	4.10 x 1.40 m ²

Disclaimer: All illustrations, floor plans and dimensions are conceptual and subject to development as per contract terms.

Camelia Apartments 62A

Total BUA: 166.50 m²



Reception	6.00 x 4.80 m ²
Entrance	3.30 x 1.55 m ²
Kitchen	3.15 x 2.10 m ²
Toilet	2.55 x 1.10 m ²
Bedroom 1	3.60 x 3.40 m ²
Master Bedroom	3.60 x 3.50 m ²
Bathroom	2.60 x 1.50 m ²
Terrace	2.15 x 1.80 m ²
Bathroom	3.00 x 1.55 m ²
Bedroom 2	3.80 x 3.60 m ²
Terrace	5.20 x 1.40 m ²

Disclaimer: All Illustrations, floor plans and dimensions are conceptual and subject to development as per contract terms.

Camelia Apartments 63A

Total BUA: 58 m²

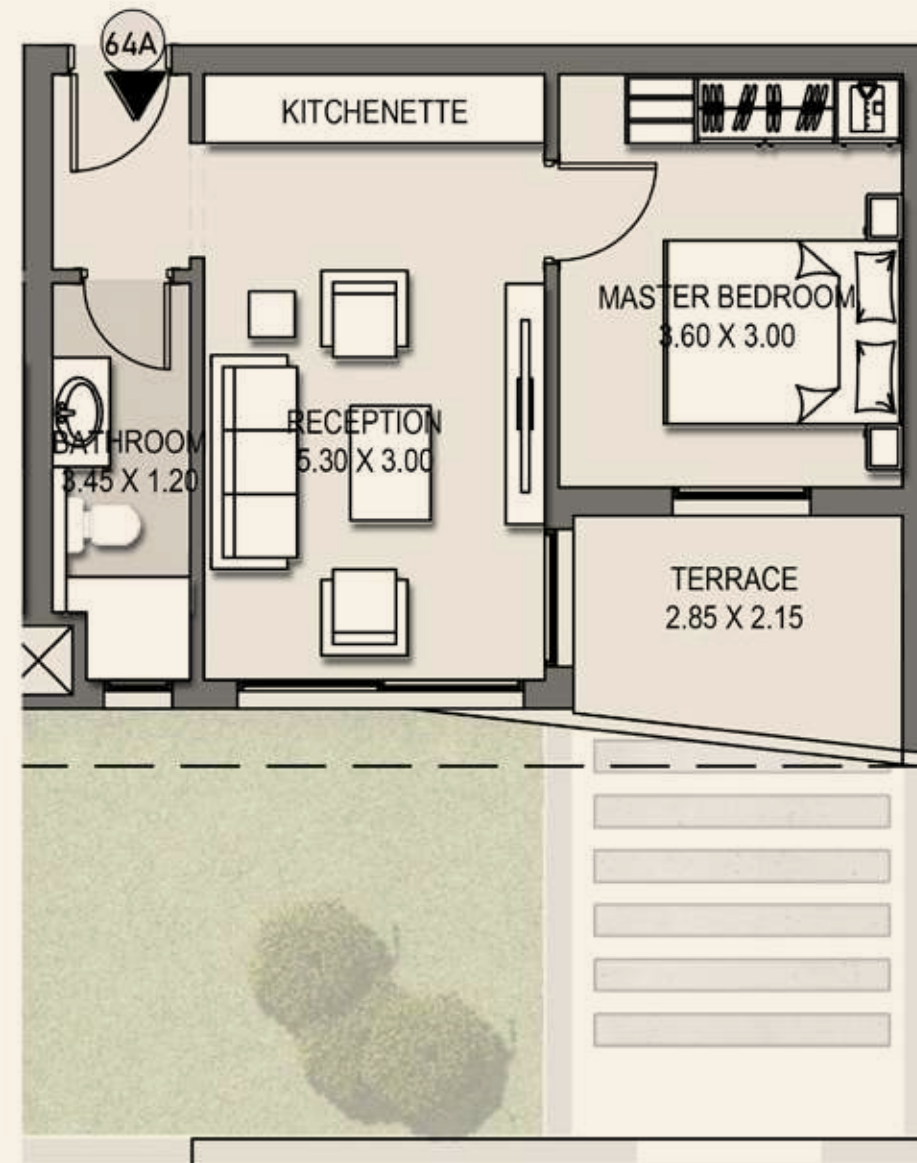


Reception	5.30 x 3.00 m ²
Master Bedroom	3.60 x 3.00 m ²
Bathroom	3.45 x 1.20 m ²
Terrace	2.85 x 2.15 m ²

Disclaimer: All Illustrations, floor plans and dimensions are conceptual and subject to development as per contract terms.

Camelia Apartments 64A

Total BUA: 58 m²

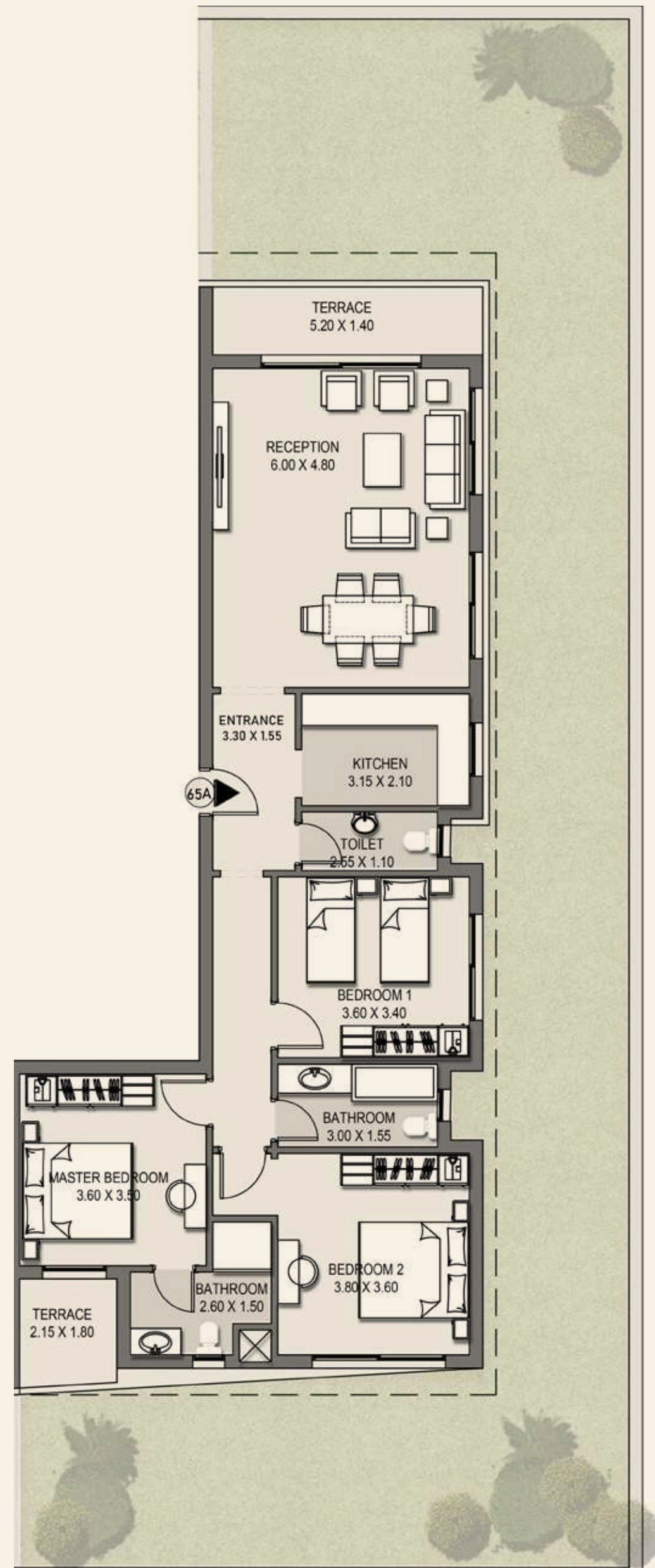


Reception	5.30 x 3.00 m ²
Master Bedroom	3.60 x 3.00 m ²
Bathroom	3.45 x 1.20 m ²
Terrace	2.85 x 2.15 m ²

Disclaimer: All Illustrations, floor plans and dimensions are conceptual and subject to development as per contract terms.

Camelia Apartments 65A

Total BUA: 166.50 m²

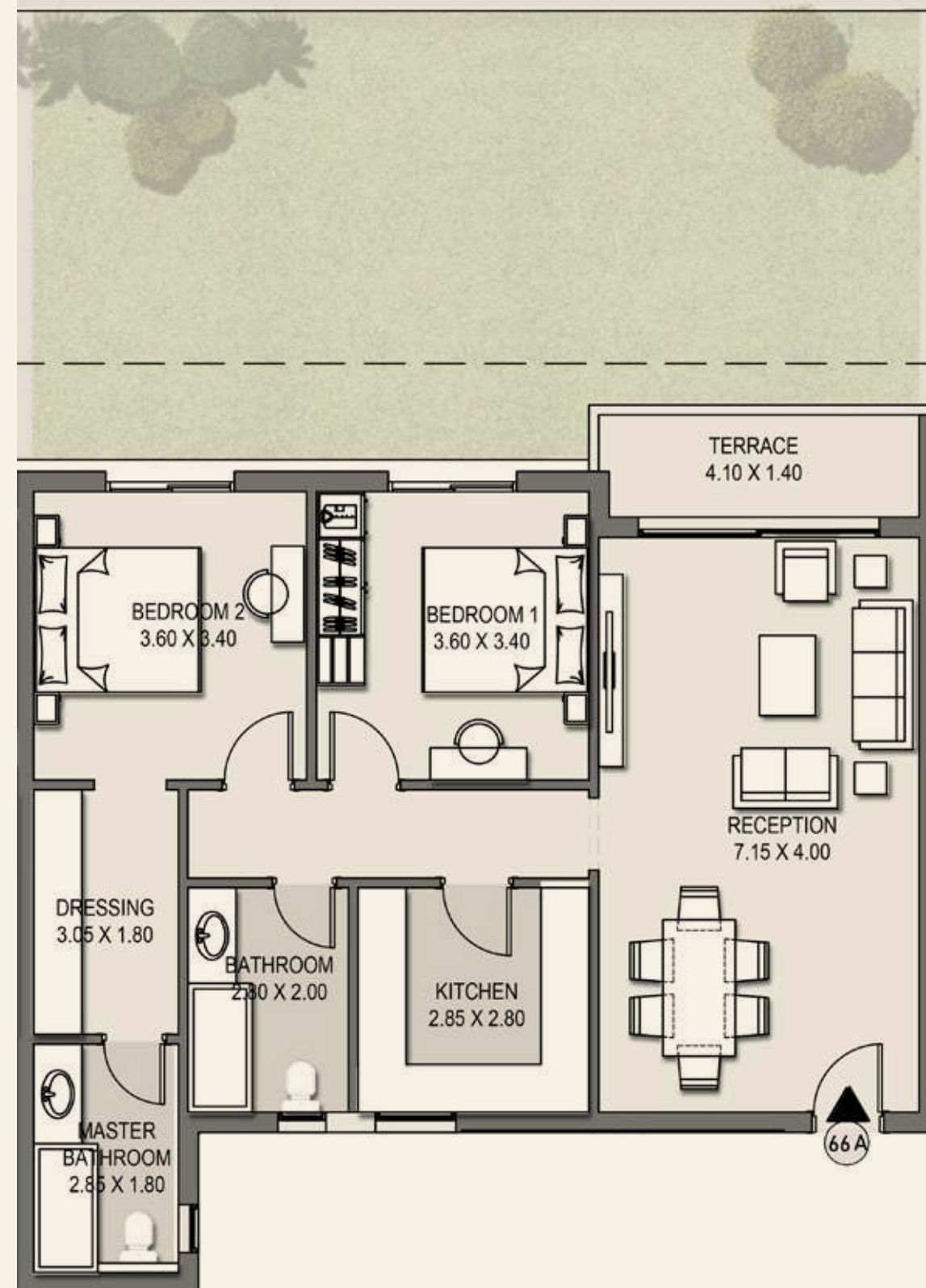


Reception	6.00 x 4.80 m ²
Kitchen	3.15 x 2.10 m ²
Toilet	2.55 x 1.10 m ²
Entrance	3.30 x 1.55 m ²
Bedroom 1	3.60 x 3.40 m ²
Master Bedroom	3.60 x 3.50 m ²
Bathroom	2.60 x 1.50 m ²
Terrace	2.15 x 1.80 m ²
Bathroom	3.00 x 1.55 m ²
Bedroom 2	3.80 x 3.60 m ²
Terrace	5.20 x 1.40 m ²

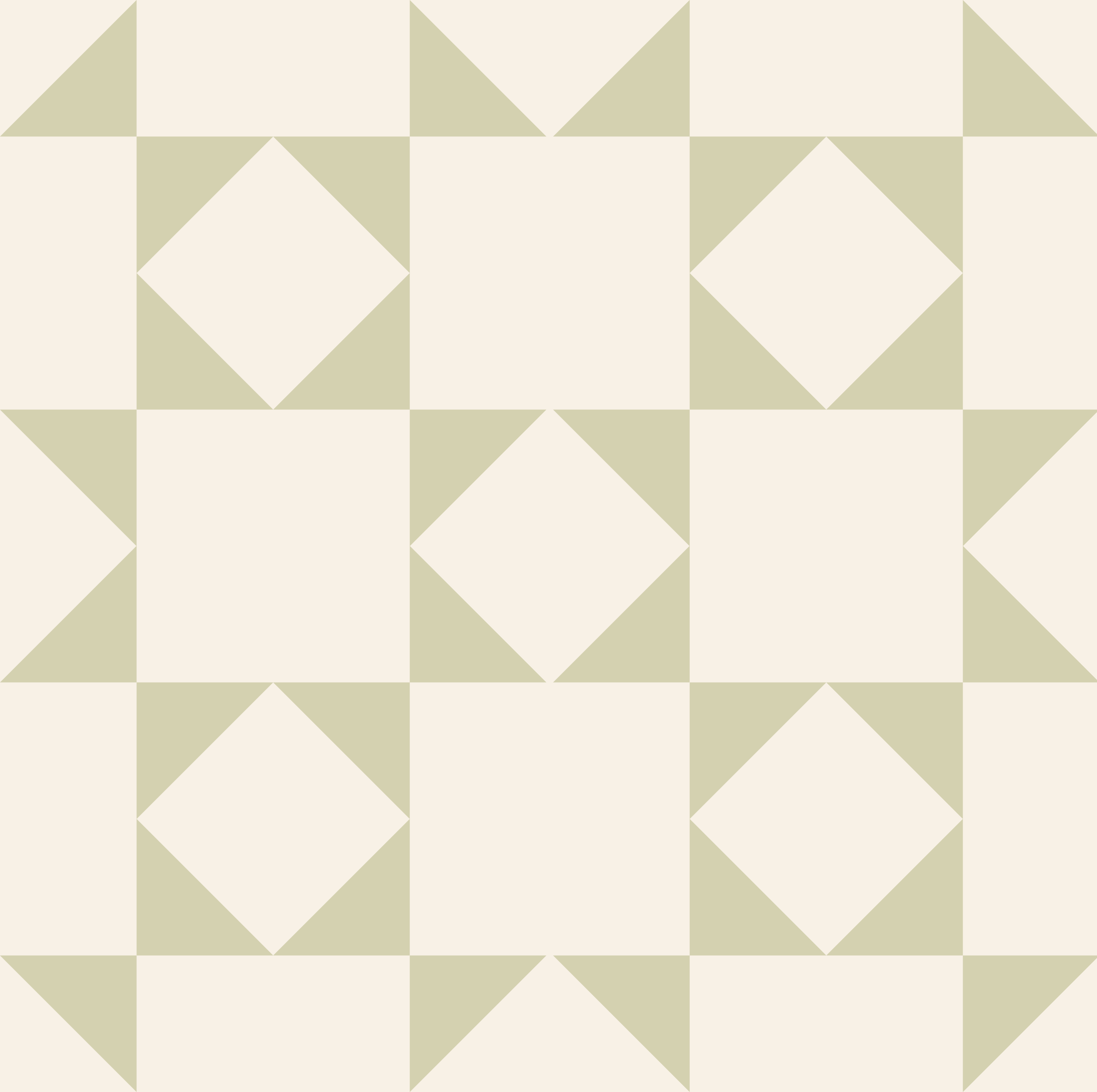
Disclaimer: All illustrations, floor plans and dimensions are conceptual and subject to development as per contract terms.

Camelia Apartments 66A

Total BUA: 129 m²



Reception	7.15 x 4.00 m ²
Bedroom 1	3.60 x 3.40 m ²
Bedroom 2	3.60 x 3.40 m ²
Dressing	3.05 x 1.80 m ²
Master Bathroom	2.85 x 1.80 m ²
Bathroom	2.80 x 2.00 m ²
Kitchen	2.85 x 2.80 m ²
Terrace	4.10 x 1.40 m ²



madinetmasr.com
16750

Sales office

Extension of El-thawra street, Cairo Suez Road at Taj City,
in front of Cairo International Airport.