

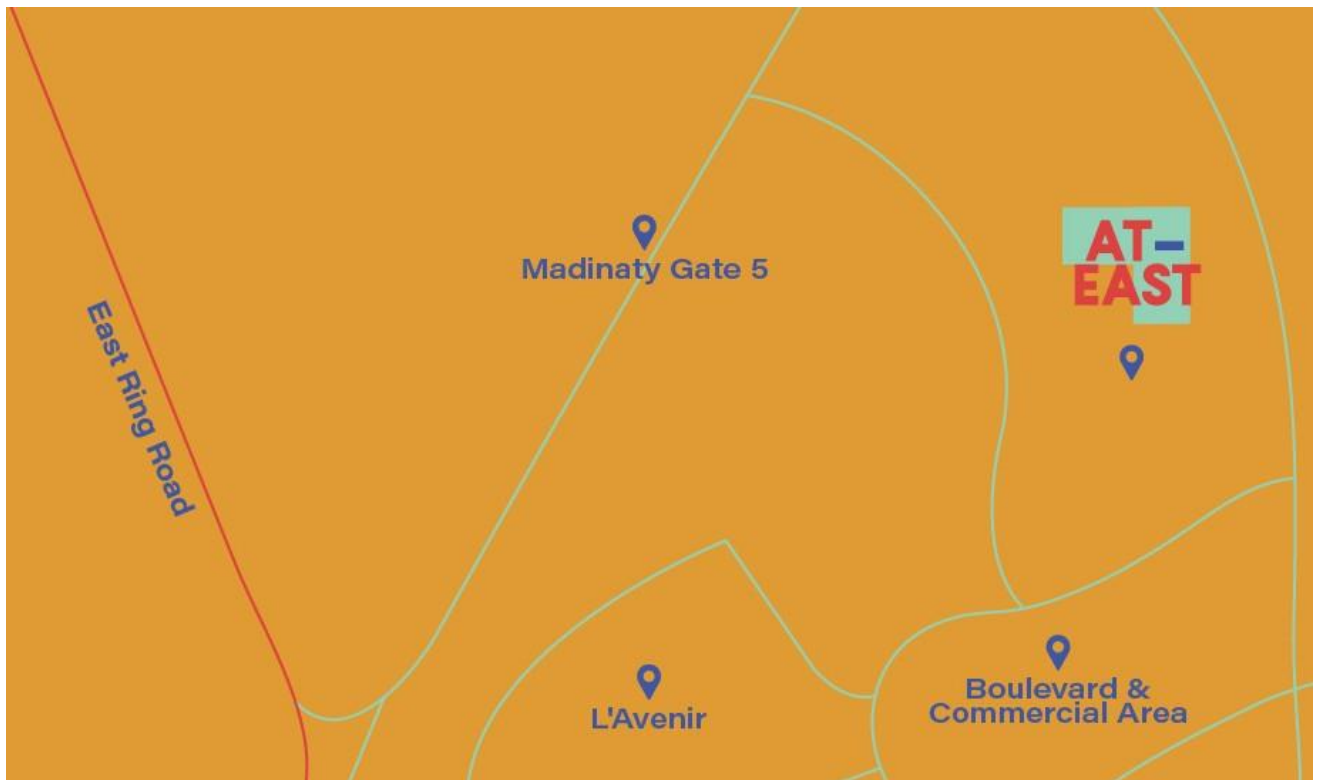
**AT-  
EAST**

# Roofscape

Apartments & Sky Villas

## FAQS

# OUR LOCATION





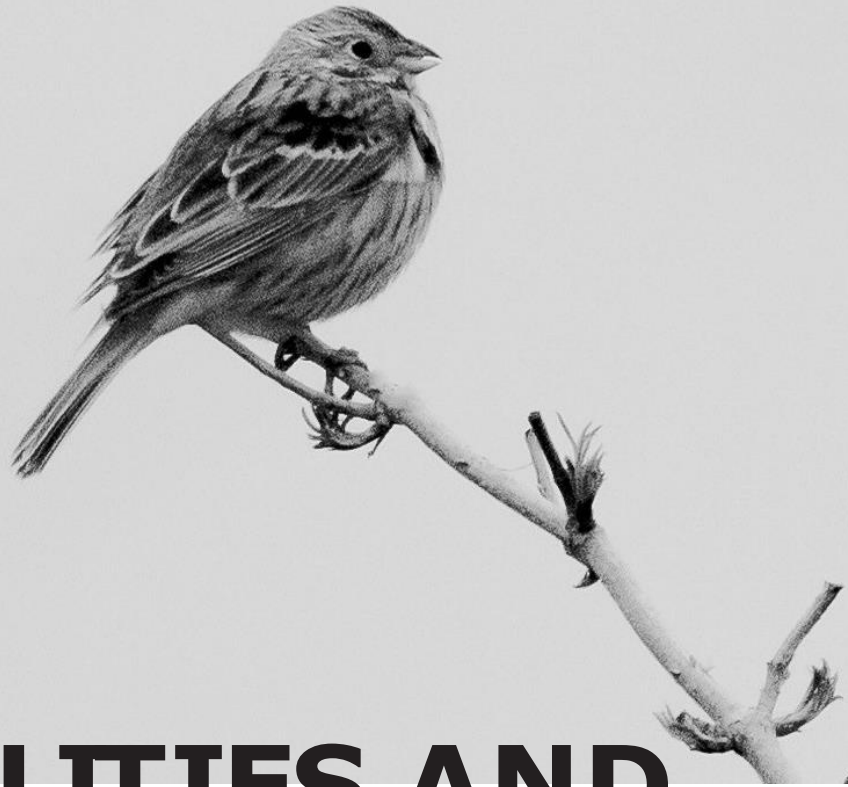
# PROJECTS FACTS AND FIGURES

Exclusive Gated Community with gated parcels.

Minutes away from the main roads (Suez Road, Middle ring road, regional ring road, Al Amal axis)

Strategically located in a premium area of Mostakbal City`s phase one.





# FACILITIES AND AMENITIES



Jogging track



Water features



Kids area



Working space



Mosque



Social hub per each parcel



Central Park "Multi purpose"



Clubhouse overlooking the main park



Commercial area

AT-  
EAST

# Roofscape

Apartments & Sky Villas  
launching now



ahly  
sabbour  
DEVELOPMENTS

Developed in  
Mostakbal City

# Roofscape





## ROOFSCAPE BUILDINGS

IT NOT ONLY ABOUT BEING CONNECTED WITH THE INSIDE – OUT OR CONNECTING BUILDINGS OR UNITS TO THE OUTER WORLD.

IT'S ALL ABOUT CONNECTING people who miss the connectivity feeling, people with the same social connections, interest, minds and ages all in one compound that suits them all.

A place that is cozy, built for their comfort with smart usage of space.

Just a Walking distance from the main hubs of entertainment and shopping & Closer to the heart.





## What makes Roof scape Different

### The shared space

**hosts** a diverse range of activities throughout the day, from morning yoga classes and energetic gym vibes to lively barbecue weekends with live music overlooking green buffer and compound courts.

**Offering unique recreational spaces** for all ages and different needs, the lounge features quiet zones for focused co-working and studying, an exciting gaming room for energetic play, and a comfortable home theater for gathering nights.



# Complex 2

## Facilities & amenities

- Outdoor fitness area
- Mini Games room
- Board game zone



# Complex 3

## Facilities & amenities

- Outdoor Gym
- Studio
- Barbeque Zone



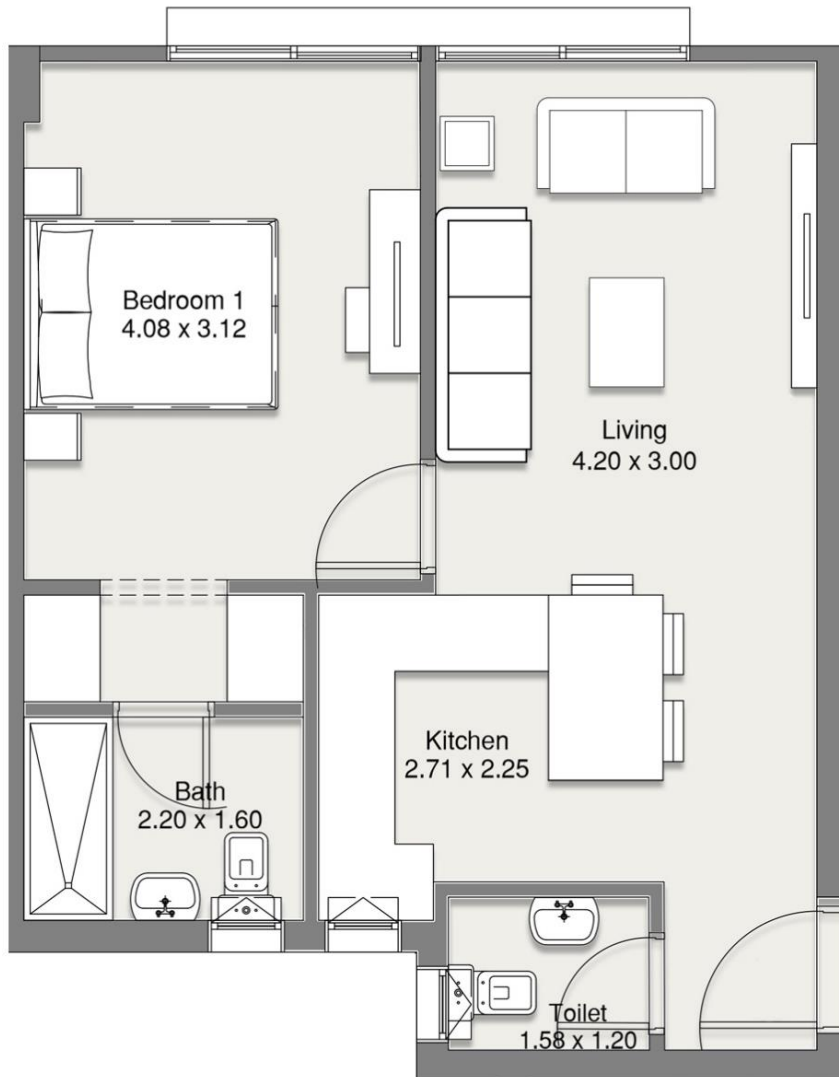
# Complex 4

## Facilities & amenities

- Co Working Space
- Outdoor Cinema
- Reading Zone

# 1 Bedroom Apartment 65sqm

## Floorplan

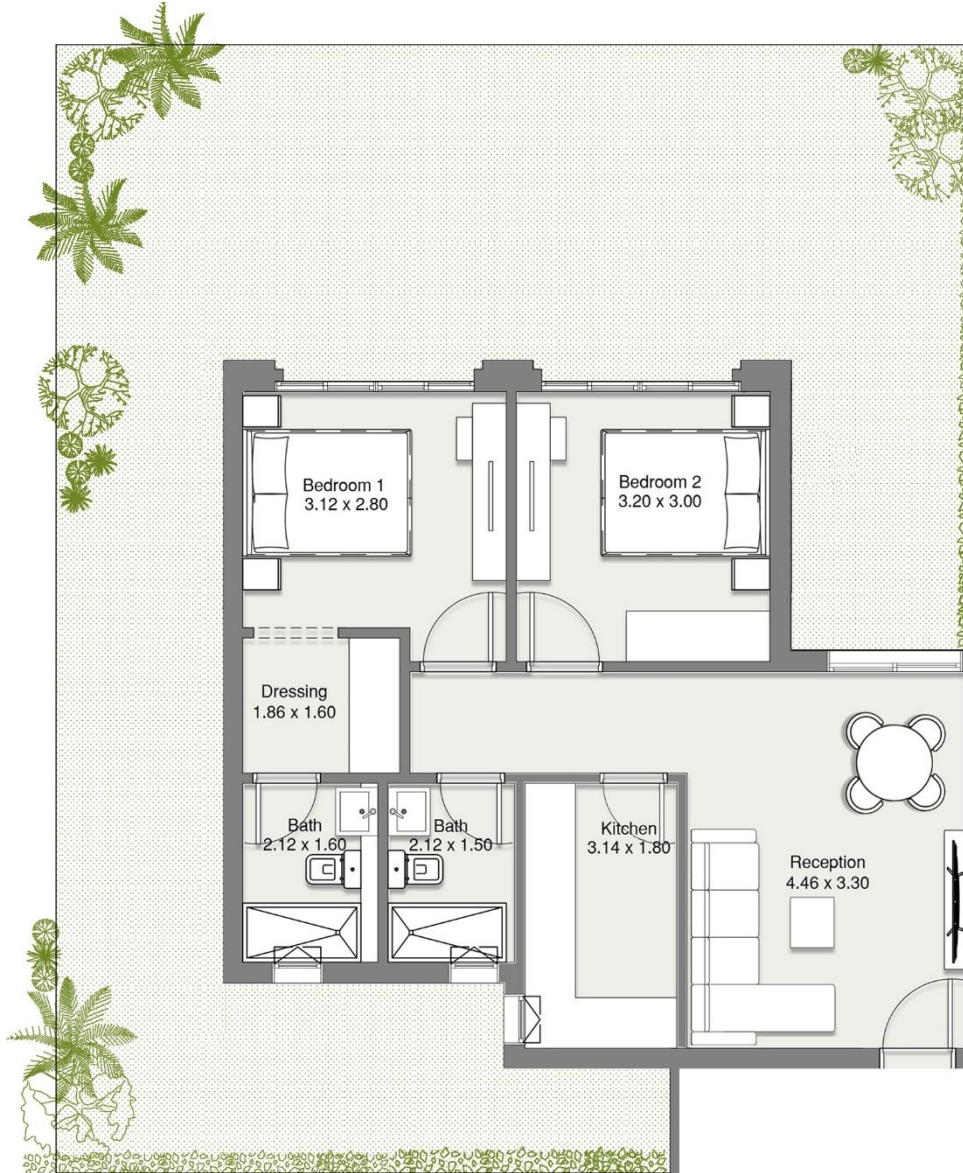


4th Floor

# Corner 2 Bedroom Apartment

## 80sqm

### Floorplan

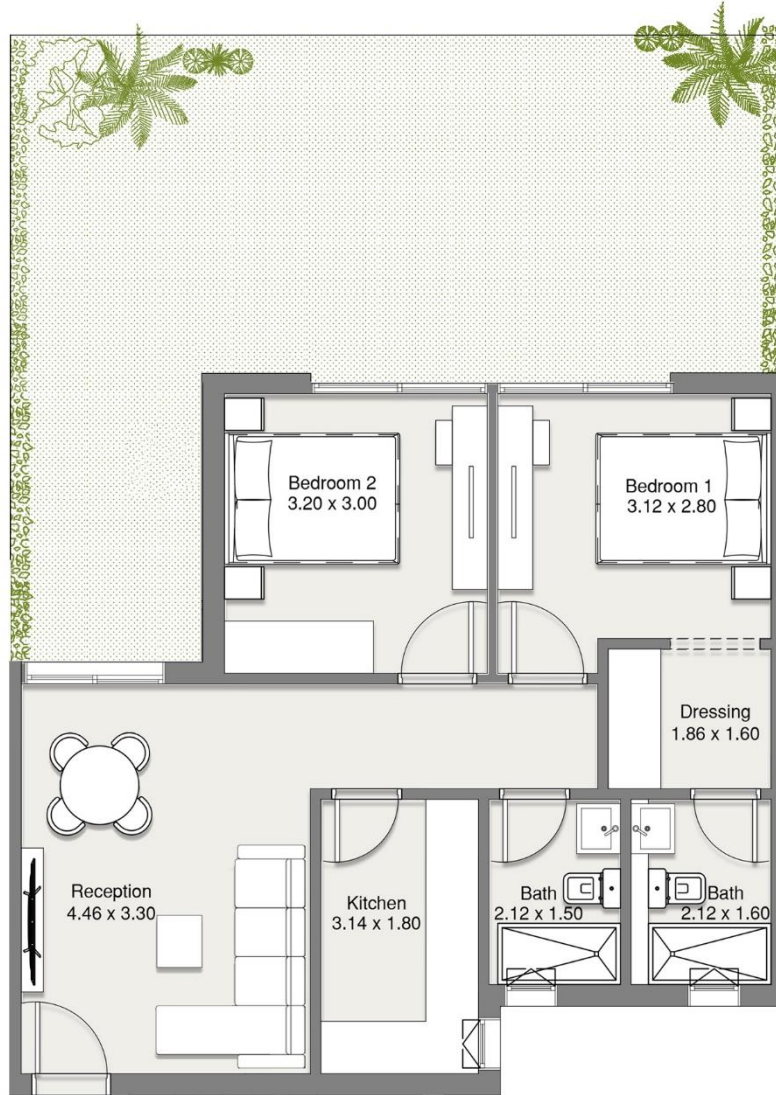


Ground floor

# Middle 2 Bedroom Apartment

## 80sqm

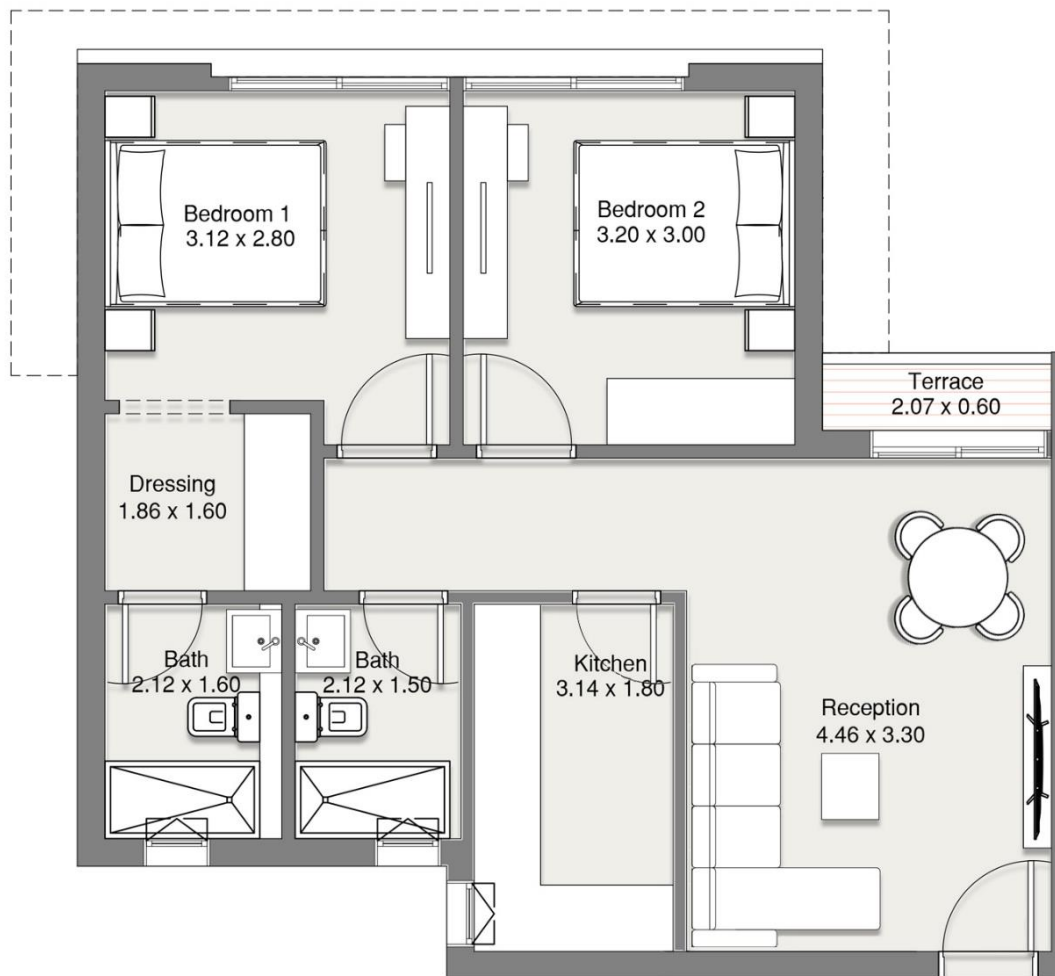
### Floorplan



Ground floor

# 2 Bedroom Apartment 80sqm

## Floorplan

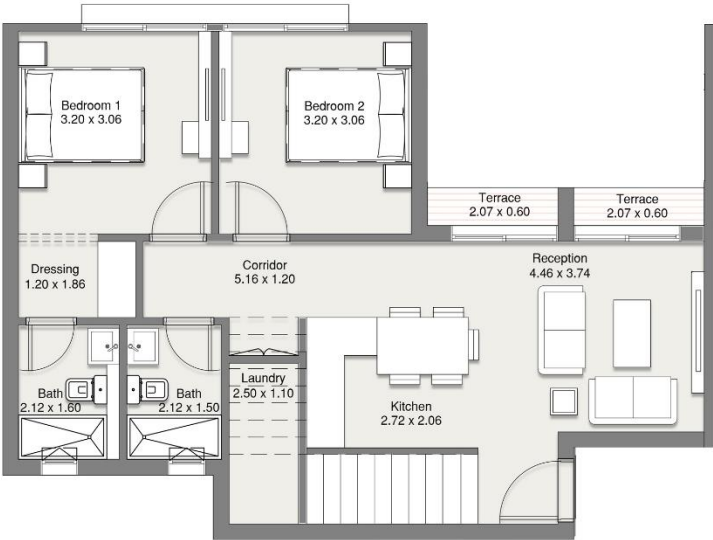


Typical floors

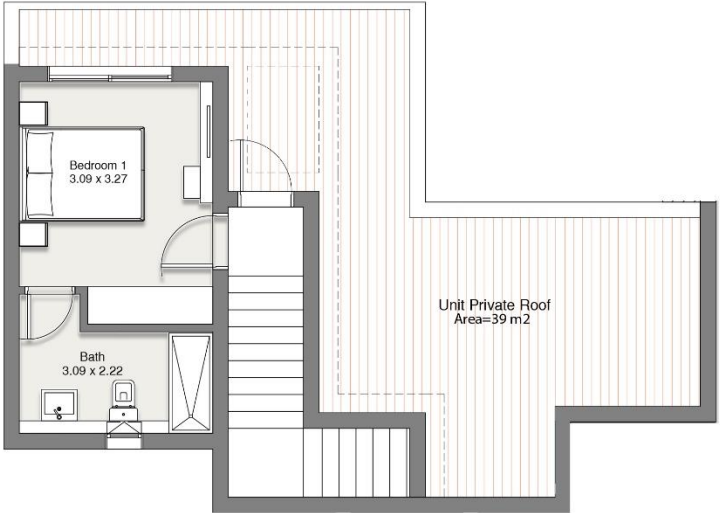


# Penthouse 130sqm

## Floorplan



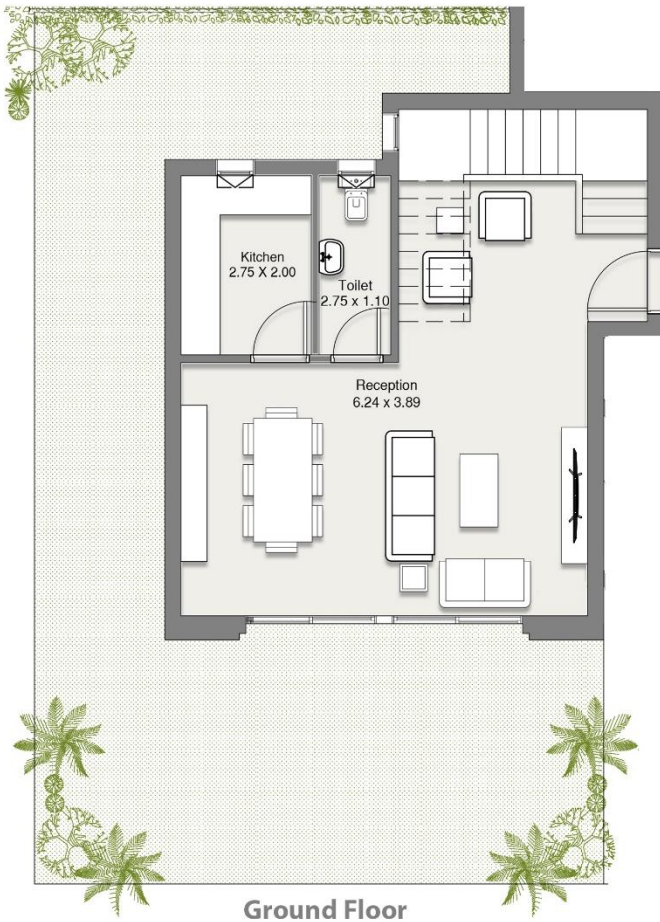
4th Floor



Roof Floor

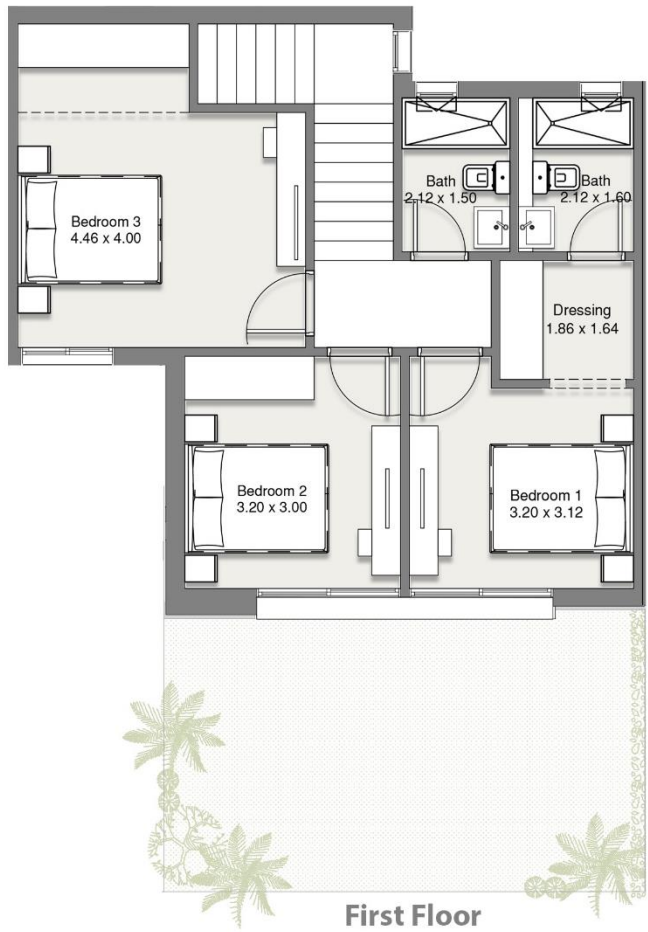
# Corner Garden Villa 145sqm Streetside

## Floorplan



# Middle Garden Villa 145sqm Streetside

## Floorplan



# Corner Garden Villa 145sqm Courtside

## Floorplan



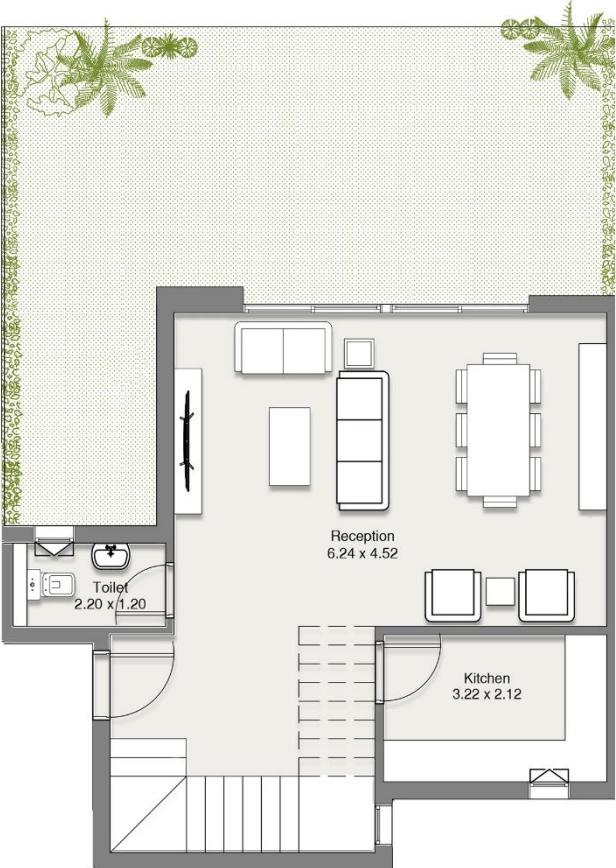
Ground Floor



First Floor

# Middle Garden Villa 145sqm Courtside

## Floorplan



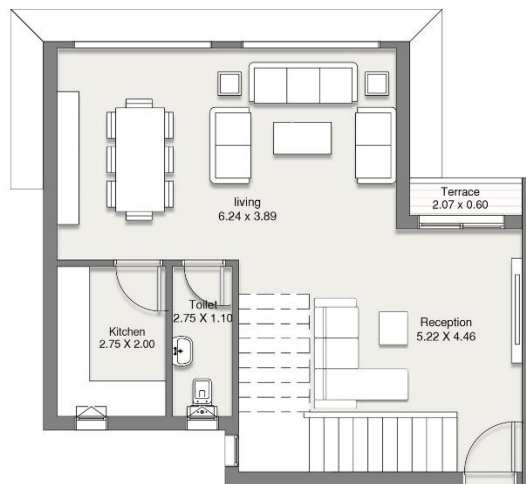
Ground Floor



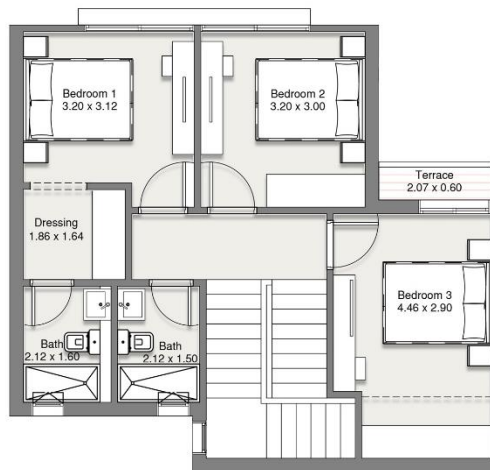
First Floor

# Sky Villa 160sqm

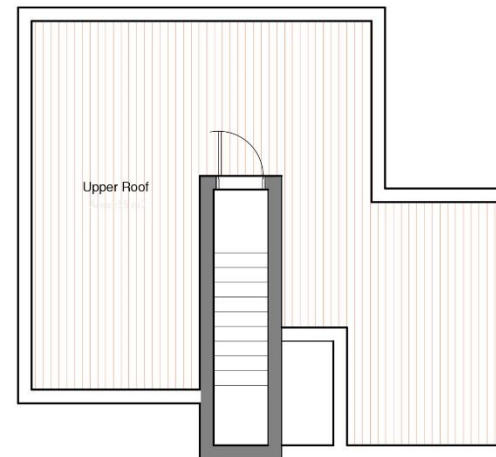
## Floorplan



3rd Floor



4th Floor



Roof Plan



**WITH A SUPERIOR OFFER AND COMPETITIVE  
PAYMENT PLAN**

**THAT WILL DEFINITELY STAND OUT FROM THE  
MARKET.**

**Exclusively  
New launch offer  
New launch  
payment plan**

**0% Down payment over 8 years  
5% - 5% ( in 6 months) . 10 years equal instalments  
5% - 5% ( in 6 months) . 12 years equal instalments  
5% - 5% ( in 6 months). 12 years back loaded each year  
5% - 5% ( in 6 months). 13 years equal instalments**

**LIMITED TIME OFFER  
13 YEARS PAYMENT PLAN**



# FAQS

AT-  
EAST